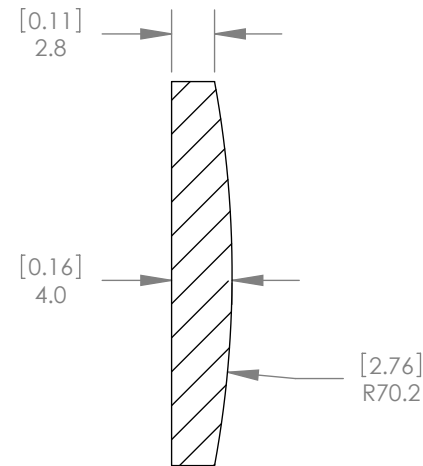
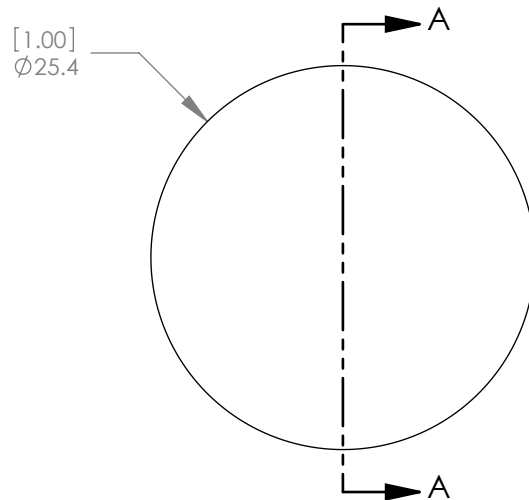




1:1 ISOMETRIC VIEW FOR REFERENCE ONLY



SECTION A-A

NOTES/SPECIFICATIONS:

DESIGN WAVELENGTH: 10.6µm  
 FOCAL LENGTH: 50.05mm ± 1%  
 BACK FOCAL LENGTH (REF): 48.38mm  
 CLEAR APERTURE: >80%  
 SURFACE QUALITY: 60-40 SCRATCH-DIG  
 CENTRATION: <3 arcmin  
 DIAMETER TOLERANCE: +0.0/-0.1mm  
 THICKNESS TOLERANCE: ± 0.1mm  
 COATING: BBAR Ravg <1.5% FROM 8µm-12µm,  
 0° AOI, ON BOTH OPTICAL SURFACES

ALL DIMENSIONS ARE IN THE FORM  $\frac{[in]}{mm}$ .  
 THIS DRAWING IS FOR INFORMATION ONLY  
 NOT INTENDED FOR MANUFACTURING

**THORLABS INC.** PO BOX 366  
 NEWTON NJ

	NAME	DATE
DRAWN	WD	8/27/2009
ENG APPR.	BW	9/03/2009
MFG APPR.	PM	9/08/2009

TITLE: ZnSe Plano-Convex Lens, f = 50.00 mm,  
 DIA = 25.40 mm, BBAR: 8-12µm

MATERIAL: ZINC SELENIDE CVD (LASER GRADE) SIZE A REV. A

SCALE: 2:1 SHEET 1 OF 1

DWG. NO. 20185-E01 PART NO. LA7656-F