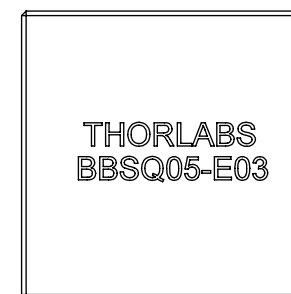
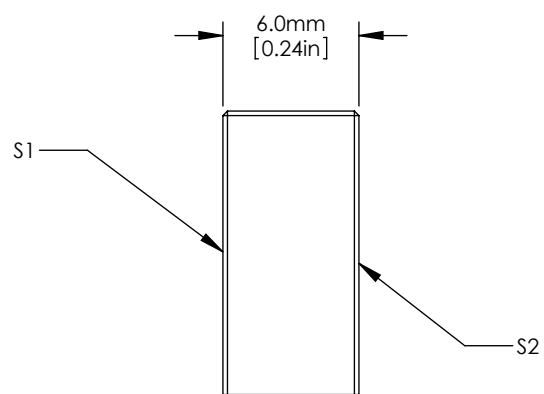
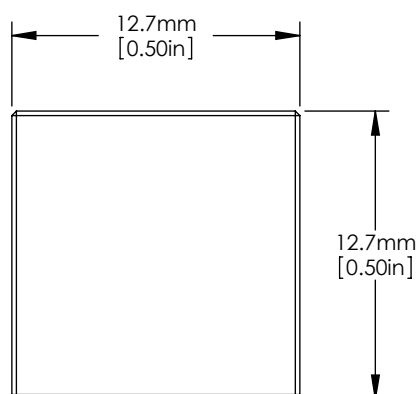


ISOMETRIC VIEW  
SCALE: 2:1



NOTES/SPECIFICATIONS:

1. CLEAR APERTURE:  $> \varnothing 11.43 \times 11.43$  mm
2. SURFACE FLATNESS (S1):  $\lambda/10$  AT 633 nm OVER CLEAR APERTURE
3. SURFACE QUALITY (S1): 10-5 SCRATCH-DIG  
(S2): FINE GRIND
4. PARALLELISM:  $\leq 3$  arcmin
5. THICKNESS TOLLERANCE:  $\pm 0.20$  mm
6. DIMENSION TOLERANCE:  $+0.00/-0.10$  mm
7. DESIGN WAVELENGTH RANGE: 750-1100 nm
8. COATING (S1): BROADBAND HR, DIELECTRIC  
 $R_s$  avg:  $>99\%$  FROM 750-1100 nm  
 $R_p$  avg:  $>99\%$  FROM 750-1100 nm  
AOI:  $0^\circ$  TO  $45^\circ$
9. DAMAGE THRESHOLD:  $0.50$  J/cm<sup>2</sup> 10 nm PULSE, 10 Hz AT 1064 nm

FOR INFORMATION ONLY  
NOT FOR MANUFACTURING PURPOSES

|   |      |           |  |               |
|---|------|-----------|--|---------------|
| DRAWING PROJECTION  |      |           | <br><a href="http://www.thorlabs.com">www.thorlabs.com</a>   |               |
| NAME  | DATE |           |  |               |
| DRAWN   | RJ   | 06/DEC/10 | $\varnothing 12.7$ mm SQAURE BROADBAND MIRROR<br>750-1100 nm |               |
| APPROVAL  | BW   | 04/NOV/21 | MATERIAL   | REV           |
| COPYRIGHT © 2021 BY THORLABS  |      |           | FUSED SILICA   | B             |
| VALUES IN PARENTHESIS ARE CALCULATED AND MAY CONTAIN ROUND OFF ERRORS |      |           | ITEM #   | APPROX WEIGHT |
|   |      |           | BBSQ05-E03   | 0.002 kg      |