

NOTES:

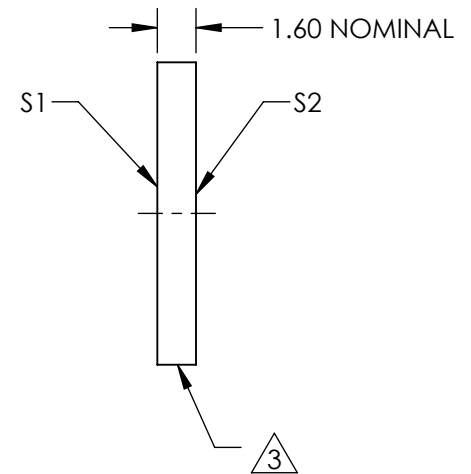
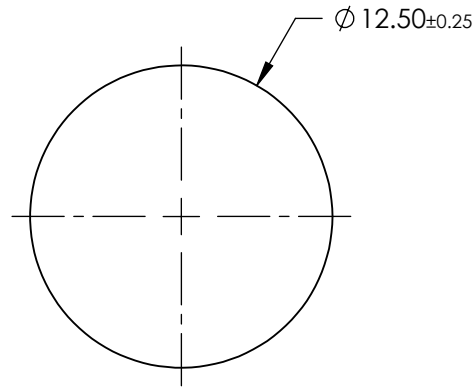
1. SUBSTRATE MATERIAL: Float Glass
2. COATING (APPLY ACROSS CLEAR APERTURE, SPECIFICATION APPLIES AFTER SANDBLASTING):

S1: R(AVG) >95% @ 450 - 650nm

S2: NONE

 FINE GRIND SURFACE

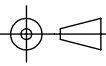
4. RoHS: COMPLIANT



SPECIFICATIONS SUBJECT TO CHANGE WITHOUT NOTICE
DIMENSIONS ARE FOR REFERENCE ONLY

**FOR INFORMATION ONLY:
DO NOT MANUFACTURE
PARTS TO THIS DRAWING**

 **Edmund Optics®**

	S1	S2	THIRD ANGLE PROJECTION 		TITLE	12.5mm Dia. Enhanced Aluminum Coated, Reflective Diffuser	
MIN CLEAR APERTURE	Ø11.50	N/A	ALL DIMS IN	mm	DWG NO	12451	SHEET 1 OF 1
BEVEL	PROTECTIVE AS NEEDED	PROTECTIVE AS NEEDED					