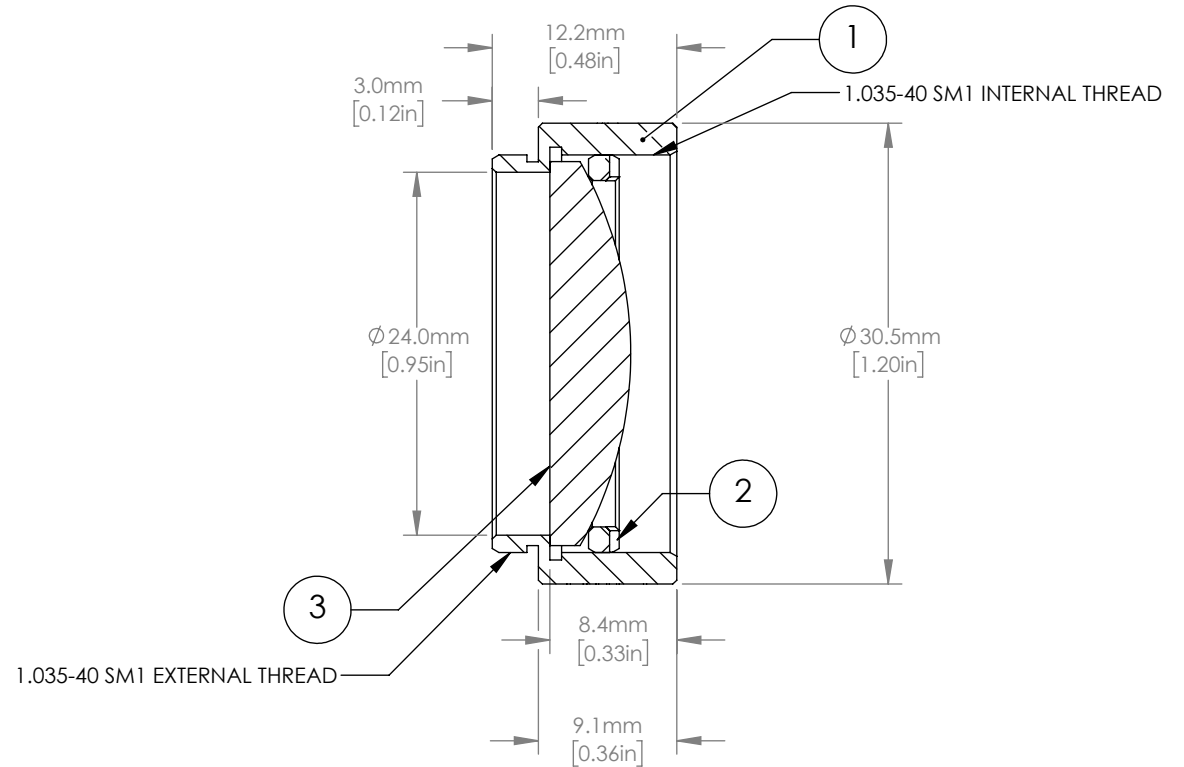
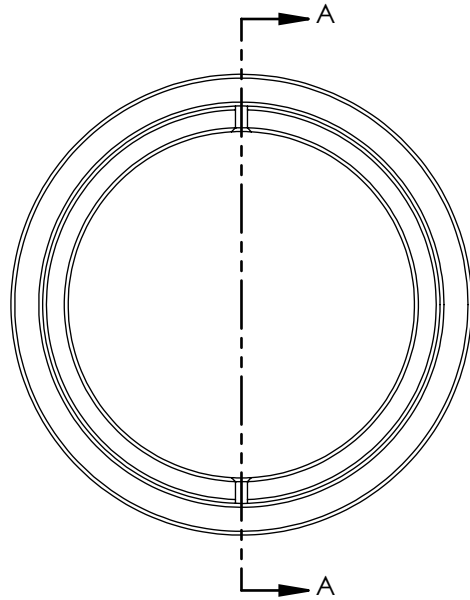


	PART DESCRIPTION	MATERIAL
①	ENGRAVED LENS TUBE	ANODIZED ALUMINUM
②	SM1RR	ANODIZED ALUMINUM
③	LA1131-C	N-BK7



SECTION A-A  
SCALE 2 : 1

- NOTES/SPECIFICATIONS:
- DESIGN WAVELENGTH: 633nm
  - FOCAL LENGTH:  $f=50.0\text{mm} \pm 1\%$
  - WORKING DISTANCE: 43.7mm
  - CLEAR APERTURE: >90% OF LENS DIAMETER
  - SURFACE QUALITY: 40-20 SCRATCH-DIG
  - COATING: BBAR  $R_{\text{avg}} < 0.5\%$  FROM 1050nm-1700nm, 0 AOI, ON OUTER OPTICAL SURFACES

FOR INFORMATION ONLY  
NOT FOR MANUFACTURING PURPOSES

DRAWING PROJECTION			<b>THORLABS</b> www.thorlabs.com
NAME	DATE	PLANO-CONVEX LENS, Ø1", SM1-THREADED MOUNT, f = 50.0 mm, C-COAT	
DRAWN	DFS	06/NOV/20	MATERIAL
APPROVAL	BW	12/NOV/20	
COPYRIGHT © 2020 BY THORLABS			SEE TABLE
VALUES IN PARENTHESIS ARE CALCULATED AND MAY CONTAIN ROUND OFF ERRORS			ITEM #
			LA1131-C-ML
			APPROX WEIGHT
			0.030 kg
			REV B