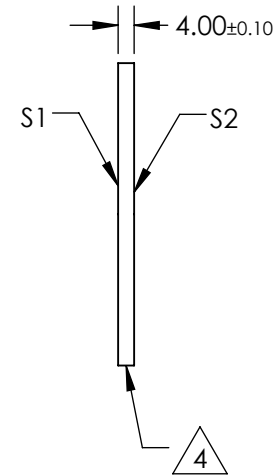
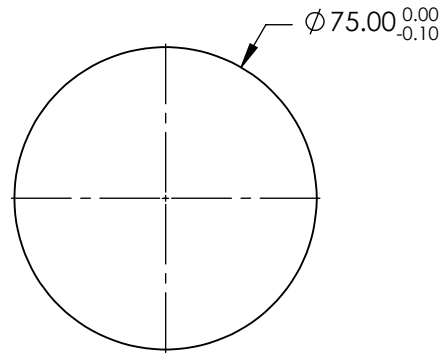
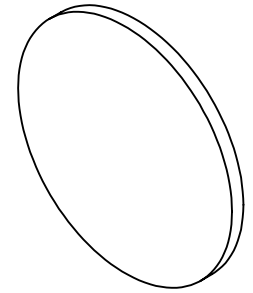


NOTES:

1. SUBSTRATE:  
FUSED SILICA
2. S2 TO BE PARALLEL WITH S1 TO WITHIN < 1 ARCMIN
3. COATING (APPLY ACROSS CLEAR APERTURE)  
S1 & S2: R(ABS) ≤ 0.25% AT 880nm  
R(AVG) ≤ 1.25% FROM 400-870nm  
R(AVG) ≤ 1.25% FROM 890-1000nm
4. FINE GRIND SURFACE
5. RoHS COMPLIANT



**FOR INFORMATION ONLY:  
DO NOT MANUFACTURE  
PARTS TO THIS DRAWING**

SPECIFICATIONS SUBJECT TO CHANGE WITHOUT NOTICE  
DIMENSIONS ARE FOR REFERENCE ONLY

	S1	S2
SHAPE	PLANO	PLANO
SURFACE QUALITY	40-20	40-20
CLEAR APERTURE (mm)	Ø67.50	Ø67.50
BEVEL	PROTECTIVE AS NEEDED	PROTECTIVE AS NEEDED

THIRD ANGLE PROJECTION

ALL DIMS IN mm

**EO**® Edmund Optics®

TITLE

75mm DIA., 4mm THICK, VIS-NIR COATED,  
λ/4 FUSED SILICA WINDOW

DWG NO

14993

SHEET  
1 OF 1