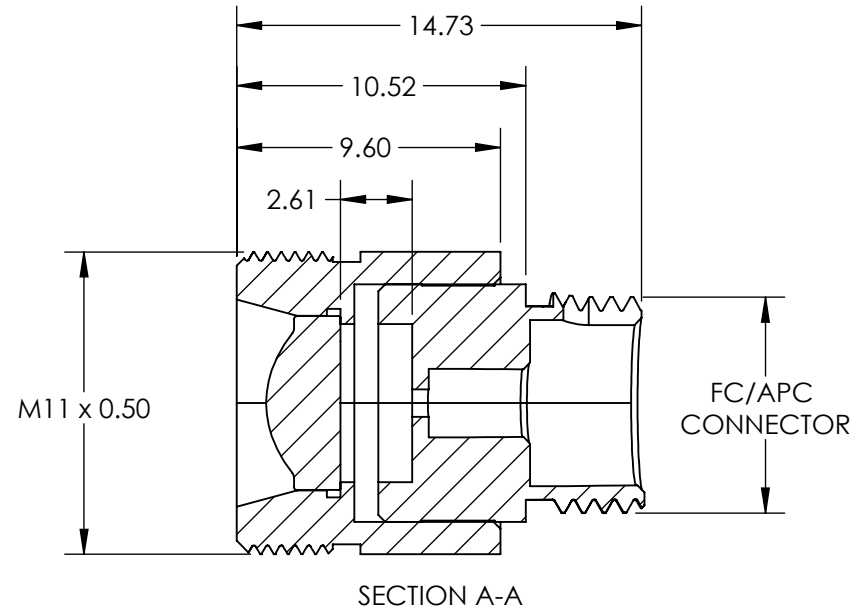
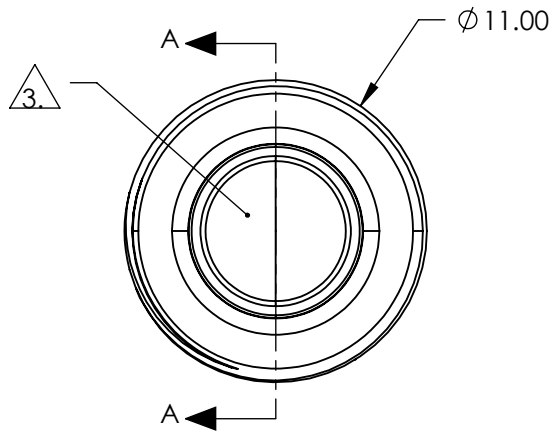
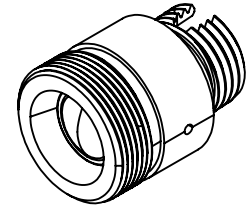


NOTES:

1. MATERIAL:  
HOUSING: STAINLESS STEEL  
LENS: D-ZLGF52LA
2. COATING (APPLY ACROSS COATING APERTURE)  
BBAR (600-1050nm)  
Rabs <1.0% @ 600 - 1050nm

3. CLEAR APERTURE: 5.07 mm

4. RoHS: COMPLIANT



SPECIFICATIONS SUBJECT TO CHANGE WITHOUT NOTICE  
DIMENSIONS ARE FOR REFERENCE ONLY

**FOR INFORMATION ONLY:  
DO NOT MANUFACTURE  
PARTS TO THIS DRAWING**

**EO**® Edmund Optics®

THIRD ANGLE PROJECTION		TITLE	633nm Alignment, 0.55 NA Fiber Collimator w/ FC/APC Connector	
ALL DIMS IN	mm	DWG NO	13552	SHEET 1 OF 1