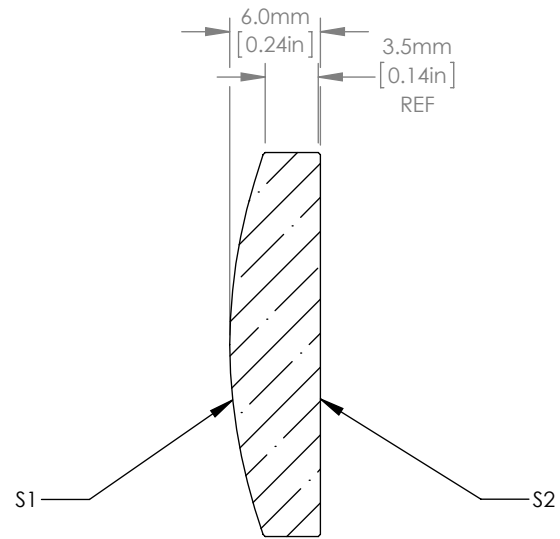
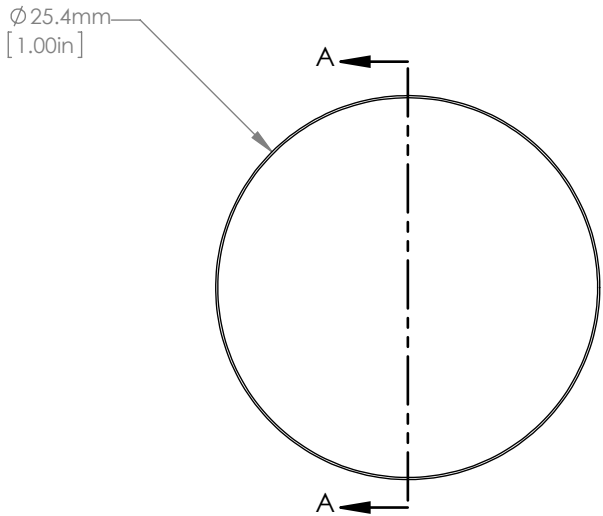


	R	k	A <sub>4</sub>
S1	35.07	-1.000000	-2.0094416E-06
S2	PLANO	-	-



ASPHERIC LENS EQUATION

$$z = \frac{Y^2}{R(1 + \sqrt{1 - (1 + k)Y^2 / R^2})} + A_4 Y^4$$



SECTION A-A

NOTES/SPECIFICATIONS:

1. DESIGN WAVELENGTH: 10.6μm
2. CLEAR APERTURE: >22.8mm
3. FOCAL LENGTH: 25.0mm ±1%
4. NUMERICAL APERTURE: 0.42
5. REFRACTIVE INDEX: 2.4027 ±0.001 AT 10.6μm
6. WORKING DISTANCE (REF): 22.51mm
7. SURFACE QUALITY: 80-50 SCRATCH-DIG
8. DIAMETER TOLERANCE: +0.00/-0.10mm
9. CENTER THICKNESS TOLERANCE: ±0.10mm
10. CENTRATION: <3arcmin
11. COATING: BBAR Ravg<1.0%, 7.0-12.0μm, 0° AOI

FOR INFORMATION ONLY  
NOT FOR MANUFACTURING PURPOSES

DRAWING PROJECTION			<b>THORLABS</b> www.thorlabs.com ZnSe ASPHERE, EFL=25.0mm AR COATED: 7.0-12.0μm	
NAME	DATE			
DRAWN	CFS	22/APR/14	MATERIAL <b>ZnSe</b>	
APPROVAL	MI	24/APR/14		
COPYRIGHT © 2014 BY THORLABS VALUES IN PARENTHESIS ARE CALCULATED AND MAY CONTAIN ROUND OFF ERRORS			ITEM #	APPROX WEIGHT
			AL72525-G	0.013 kg
			REV	A