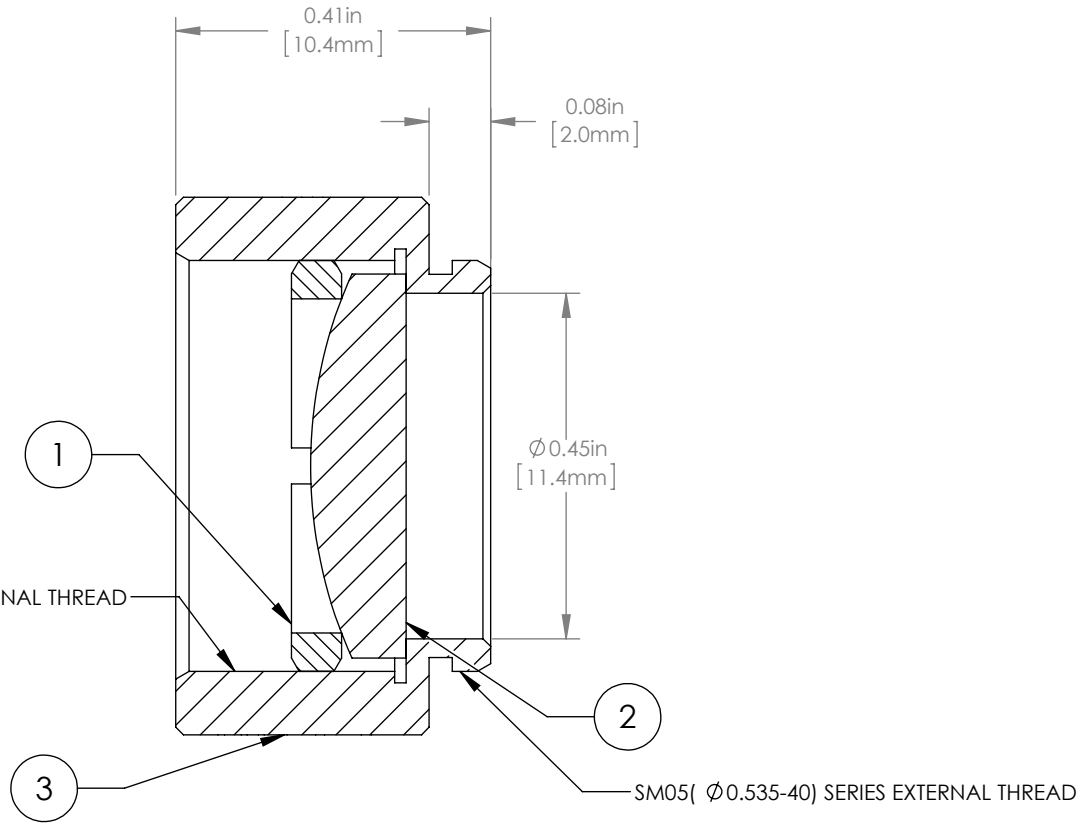
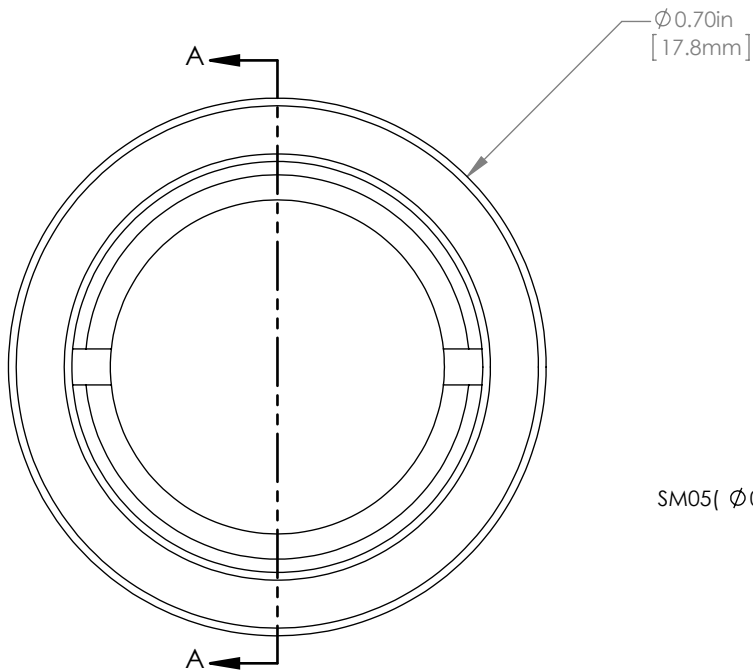




	PART DESCRIPTION	MATERIAL
①	SM05RR	ANODIZED ALUMINUM
②	LA1289-A	N-BK7
③	ENGRAVED HOUSING	ANODIZED ALUMINUM



NOTES/SPECIFICATIONS:

- DESIGN WAVELENGTH: 587.6nm
- FOCAL LENGTH: $f=29.9\text{mm} \pm 1\%$
- WORKING DISTANCE (REF): 25.0mm
- CLEAR APERTURE: $> \text{Ø} 11.05\text{mm}$
- SURFACE QUALITY: 40-20 SCRATCH-DIG
- CENTRATION: $< 3\text{arcmin}$
- COATING: BBAR $\text{Ravg} < 0.5\%$ FROM 350-700nm, AOI: 0° , ON OUTER OPTICAL SURFACES

FOR INFORMATION ONLY
NOT FOR MANUFACTURING PURPOSES

DRAWING PROJECTION						THORLABS www.thorlabs.com		
NAME	DATE	Ø 1/2" MOUNTED PLANO CONVEX LENS, f=30mm, -A COAT				REV		
DRAWN	GG	30/JUN/15					A	
APPROVAL	DD	30/JUN/15	MATERIAL				SEE TABLE	
COPYRIGHT © 2015 BY THORLABS				ITEM #		APPROX WEIGHT		
VALUES IN PARENTHESIS ARE CALCULATED AND MAY CONTAIN ROUND OFF ERRORS				LA1289-A-ML		4 g		