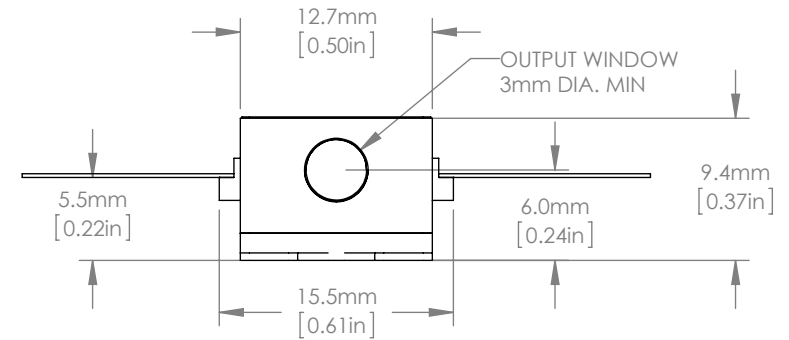
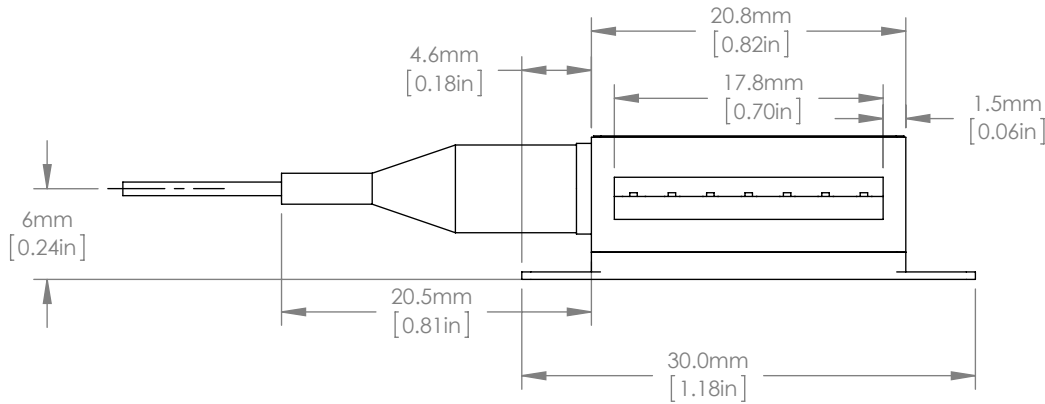


PIN IDENTIFICATION

- | | |
|----------------------|-----------------|
| 1. TEC + | 14. TEC - |
| 2. Thermistor (chip) | 13. Case |
| 3. NC | 12. NC |
| 4. NC | 11. Dev Cathode |
| 5. Thermistor (chip) | 10. Dev Anode |
| 6. Thermistor (case) | 9. NC |
| 7. Thermistor (case) | 8. NC |



NOTES :

1. DEVICE IS PROVIDED WITH A 1000mm LENGTH FIBER TAIL TERMINATED IN AN FC/APC CONNECTOR; THE FIBER IS THORLABS PM780-HP FIBER PROTECTED BY 900UM DIAMETER LOOSE TUBE OVER THE FIRST 750mm, WITH REMAINING LENGTH TO CONNECTOR AS 250um PRIMARY COATED FIBER.

FOR INFORMATION ONLY
NOT FOR MANUFACTURING PURPOSES

DRAWING PROJECTION				 www.thorlabs.com	
NAME	DATE	Tapered Amplifier (850nm)			
DRAWN	AD	18/JAN/12	MATERIAL	N/A	REV A
APPROVAL	PH	18/JAN/12	ITEM #	TPA850P10	APPROX WEIGHT
COPYRIGHT © 2012 BY THORLABS VALUES IN PARENTHESIS ARE CALCULATED AND MAY CONTAIN ROUND OFF ERRORS					
					0.03 kg