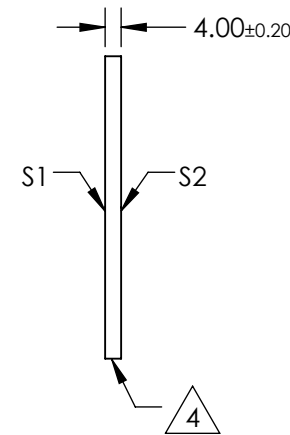
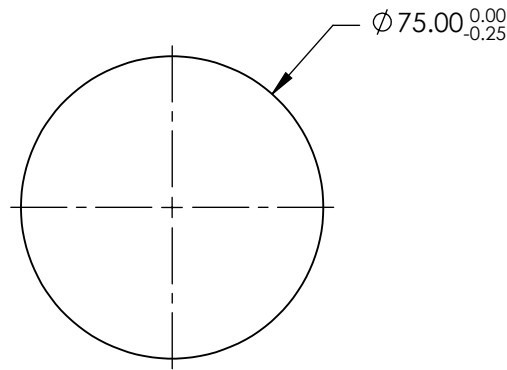
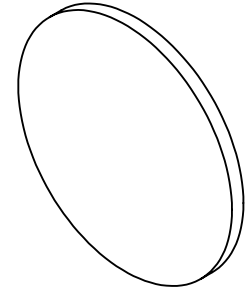


NOTES:

1. SUBSTRATE:  
N-BK7
2. S2 TO BE PARALLEL WITH S1 TO <1 ARCMIN
3. COATING (APPLY ACROSS CLEAR APERTURE)  
S1 & S2: R(AVG) <0.5% @ 350 - 700nm

 4. FINE GRIND SURFACE

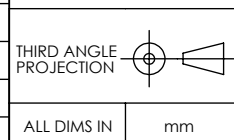
5. RoHS COMPLIANT



**FOR INFORMATION ONLY:  
DO NOT MANUFACTURE  
PARTS TO THIS DRAWING**

SPECIFICATIONS SUBJECT TO CHANGE WITHOUT NOTICE  
DIMENSIONS ARE FOR REFERENCE ONLY

|                 | S1                   | S2                   |
|-----------------|----------------------|----------------------|
| SHAPE           | PLANO                | PLANO                |
| SURFACE QUALITY | 60-40                | 60-40                |
| CLEAR APERTURE  | Ø67.50               | Ø67.50               |
| BEVEL           | PROTECTIVE AS NEEDED | PROTECTIVE AS NEEDED |



 **Edmund Optics®**

|        |   |                 |
|--------|---|-----------------|
| TITLE  | 75mm DIA., 4mm THICK, VIS-EXT COATED,<br>λ/4 N-BK7 WINDOW |                 |
| DWG NO | 15795   | SHEET<br>1 OF 1 |