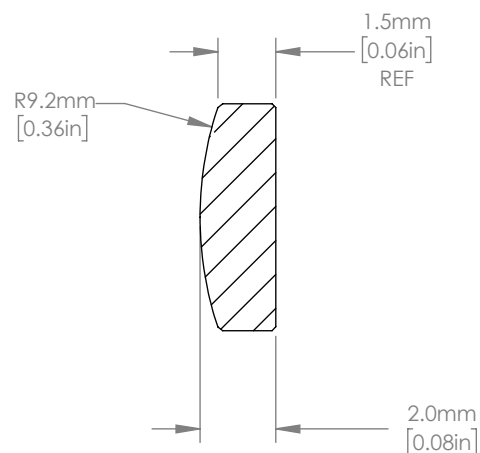
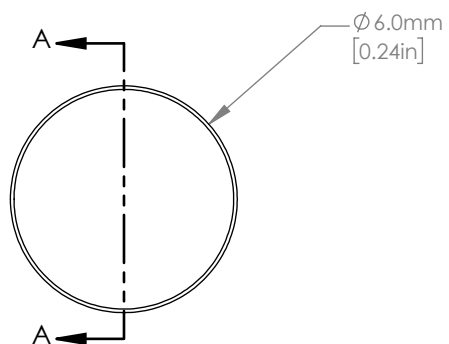




ISOMETRIC VIEW  
SCALE: 5:1



SECTION A-A

NOTES/SPECIFICATIONS:

1. DESIGN WAVELENGTH: 587.6 nm
2. FOCAL LENGTH:  $f=20.1\text{ mm} \pm 1\%$
3. BACK FOCAL LENGTH(REF):  $bf=18.7\text{ mm}$
4. CLEAR APERTURE:  $> \varnothing 5.4\text{ mm}$
5. SURFACE QUALITY: 40-20 SCRATCH-DIG
6. CENTRATION:  $< 3\text{ arcmin}$
7. DIAMETER TOLERANCE:  $+0.0/-0.1\text{ mm}$
8. THICKNESS TOLERANCE:  $\pm 0.1\text{ mm}$
9. COATING: BBAR  $R_{avg} < 0.5\%$  FROM 350-700 nm, AOI:  $0^\circ$

FOR INFORMATION ONLY  
NOT FOR MANUFACTURING PURPOSES

DRAWING PROJECTION			<b>THORLABS</b> www.thorlabs.com	
	NAME	DATE	$\varnothing 6.0\text{ mm } f=20.1\text{ mm}$ FUSED SILICA PLANO CONVEX LENS, -A COAT	
DRAWN	YB	25/JUN/21		
APPROVAL	DS	27/AUG/21	MATERIAL	REV
COPYRIGHT © 2021 BY THORLABS			UV FUSED SILICA	A
VALUES IN PARENTHESIS ARE CALCULATED AND MAY CONTAIN ROUND OFF ERRORS			ITEM #	APPROX WEIGHT
			LA4194-A	0.11 g