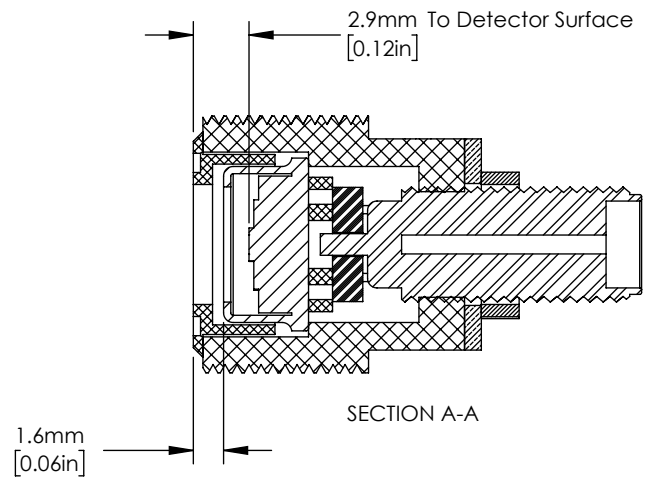
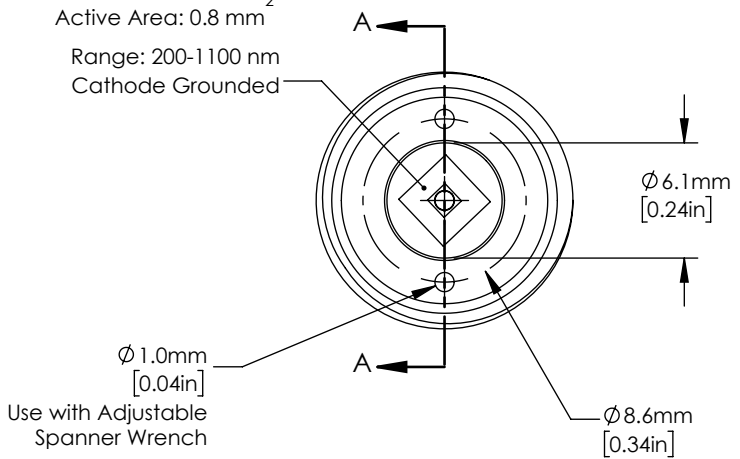
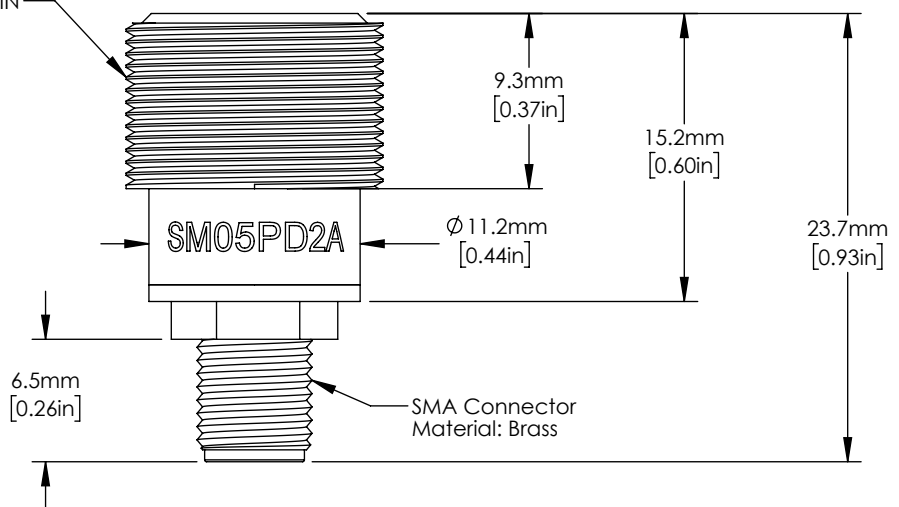


FDS010 Silicon Photodiode
 Active Area: 0.8 mm²
 Range: 200-1100 nm
 Cathode Grounded



Housing
 External Thread:
 SM05 (0.535-40)
 Material: Black DELRIN



FOR INFORMATION ONLY
 NOT FOR MANUFACTURING PURPOSES

DRAWING PROJECTION			THORLABS www.thorlabs.com	
NAME	DATE	SM05 Mounted Si-Photodiode		REV
DRAWN WKC	29/MAR/18	MATERIAL See Drawing		D
APPROVAL EC	30/MAR/18	ITEM #	APPROX WEIGHT	
COPYRIGHT © 2018 BY THORLABS		SM05PD2A	.005 kg	
VALUES IN PARENTHESIS ARE CALCULATED AND MAY CONTAIN ROUND OFF ERRORS				