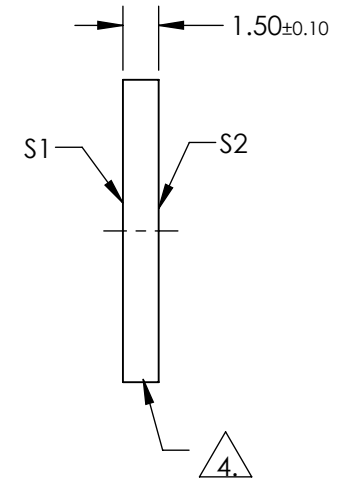
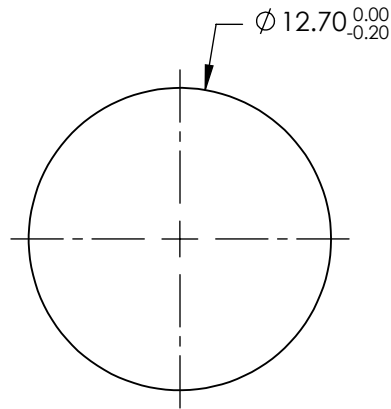


NOTES:

1. SUBSTRATE:
FUSED SILICA
2. SURFACE S2 TO BE PARALLEL TO SURFACE S1 TO WITHIN < 5 ARCSEC
3. COATING (APPLY ACROSS COATING APERTURE):
S1 & S2: R(ABS) < 0.25% @ 532nm
R(ABS) < 0.25% @ 1064nm
R(AVG) < 1.0% @ 500 - 1100nm

4. FINE GRIND

5. ROHS COMPLIANT

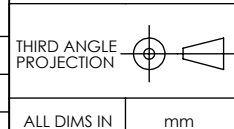


**FOR INFORMATION ONLY:
DO NOT MANUFACTURE
PARTS TO THIS DRAWING**

SPECIFICATIONS SUBJECT TO CHANGE WITHOUT NOTICE
DIMENSIONS ARE FOR REFERENCE ONLY

EO® Edmund Optics®

| | S1 | S2 |
|-----------------|----------------------|----------------------|
| SHAPE | PLANO | PLANO |
| SURFACE QUALITY | 20-10 | 20-10 |
| CLEAR APERTURE | Ø10.16 | Ø10.16 |
| BEVEL | PROTECTIVE AS NEEDED | PROTECTIVE AS NEEDED |



| | | |
|--------|---|--------------|
| TITLE | 12.7mm DIA., 1.5mm THICK, YAG-BBAR COATED, λ/10 FUSED SILICA WINDOW | |
| DWG NO | 15784 | SHEET 1 OF 1 |