

NOTES:

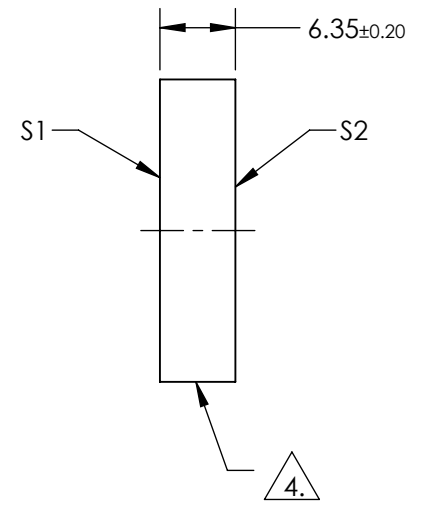
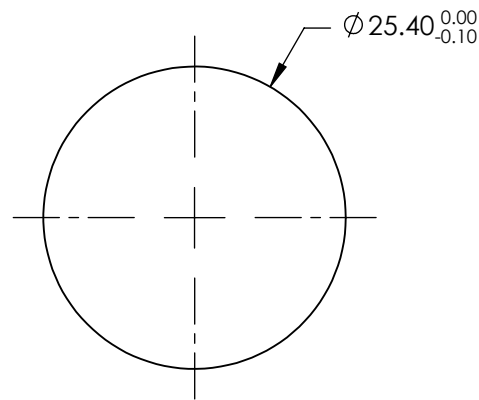
1. SUBSTRATE: FUSED SILICA
2. SURFACE S2 TO BE PARALLEL TO SURFACE S1 TO WITHIN <3 ARCMIN
3. COATING (APPLY ACROSS COATING APERTURE)
 S1: Laser V-Coat (355nm)
 R(ABS) <0.25% @ 355nm @ 0 ±5° AOI

DAMAGE THRESHOLD,
 PULSED: 7.5 J/cm² @ 355nm, 20ns, 20Hz

S2: NONE

△ 4. FINE GRIND SURFACE

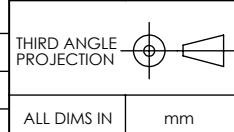
5. ROHS: COMPLIANT



**FOR INFORMATION ONLY:
 DO NOT MANUFACTURE
 PARTS TO THIS DRAWING**

SPECIFICATIONS SUBJECT TO CHANGE WITHOUT NOTICE
 DIMENSIONS ARE FOR REFERENCE ONLY

	S1	S2
SHAPE	PLANO	PLANO
SURFACE QUALITY	10-5	10-5
CLEAR APERTURE	90 %	90 %
BEVEL	PROTECTIVE AS NEEDED	PROTECTIVE AS NEEDED



EO® **Edmund Optics**®

TITLE	25.4mm Dia. 355nm, Nd:YAG Laser Line Beam Sampler		
DWG NO	39004	SHEET	1 OF 1