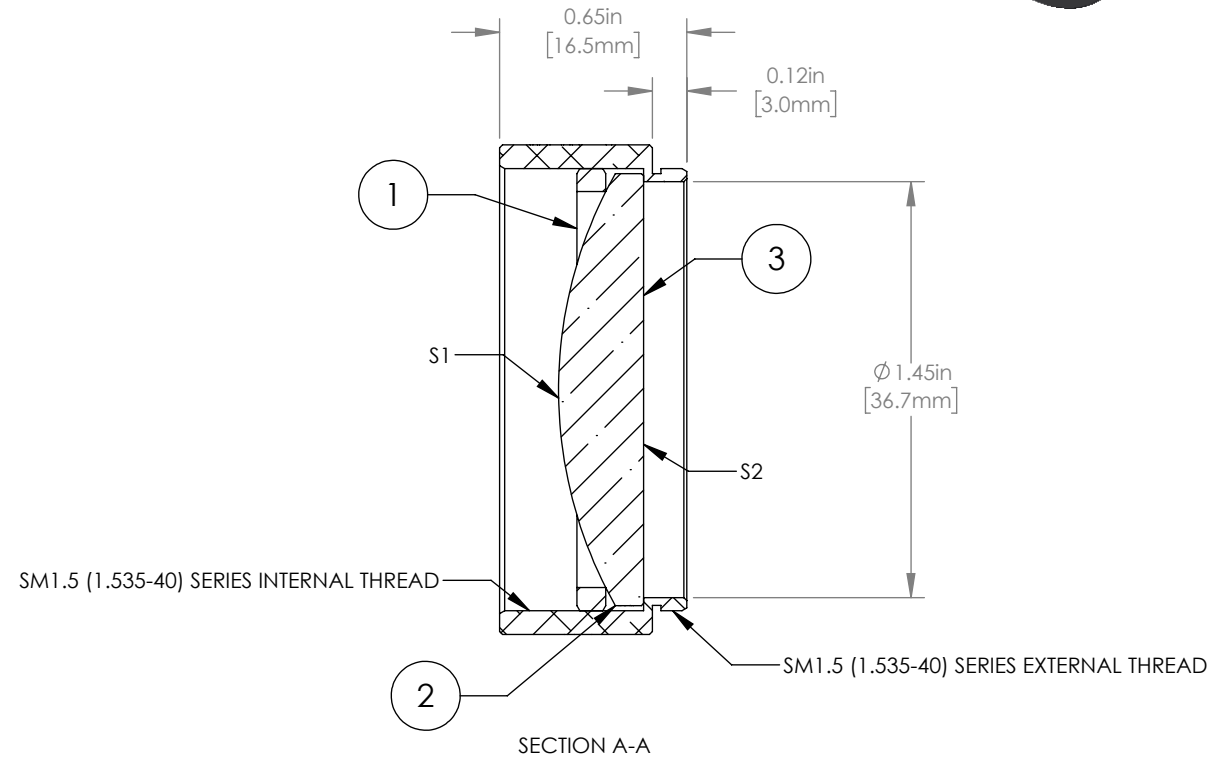
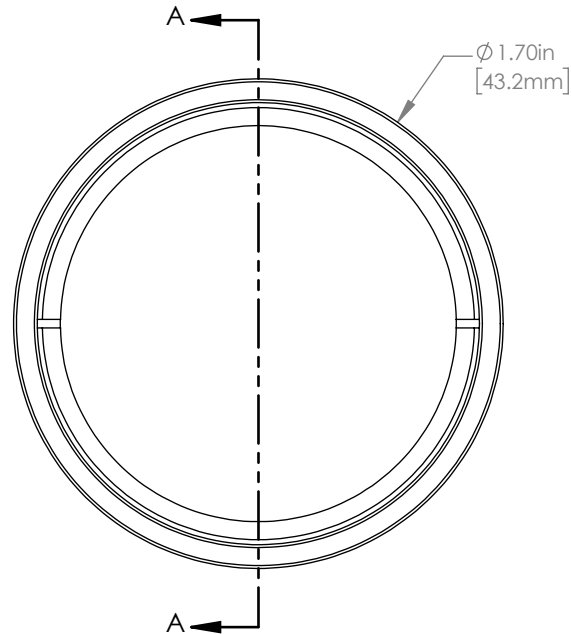
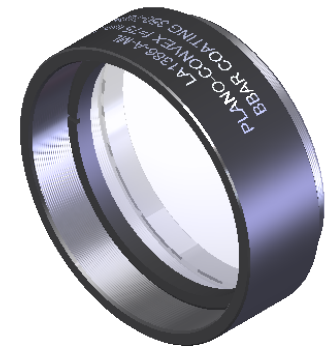


	PART DESCRIPTION	MATERIAL
①	SM1.5RR	ANODIZED ALUMINUM
②	LA1386-A	N-BK7
③	ENGRAVED HOUSING	ANODIZED ALUMINUM



NOTES/SPECIFICATIONS:

- DESIGN WAVELENGTH: 587.6 nm
- FOCAL LENGTH: $f=75.0\text{ mm} \pm 1\%$
- WORKING DISTANCE (REF): 67.1 mm
- CLEAR APERTURE: $>\phi 34.29\text{ mm}$
- SURFACE QUALITY: 40-20 SCRATCH-DIG
- COATING (S1 & S2): BBAR 350-700 nm, $R_{\text{avg}} < 0.5\%$, AT 0° AOI

FOR INFORMATION ONLY
NOT FOR MANUFACTURING PURPOSES

DRAWING PROJECTION			THORLABS www.thorlabs.com	
	NAME	DATE	MOUNTED $\phi 38.1\text{ mm}$ $f=75.0\text{ mm}$ N-BK7 PLANO CONVEX LENS, -A COATING	
DRAWN	CP	19/NOV/19	MATERIAL	SEE TABLE
APPROVAL	DD	19/NOV/19	ITEM #	APPROX WEIGHT
COPYRIGHT © 2020 BY THORLABS			LA1386-A-ML	26 g
VALUES IN PARENTHESIS ARE CALCULATED AND MAY CONTAIN ROUND-OFF ERRORS				