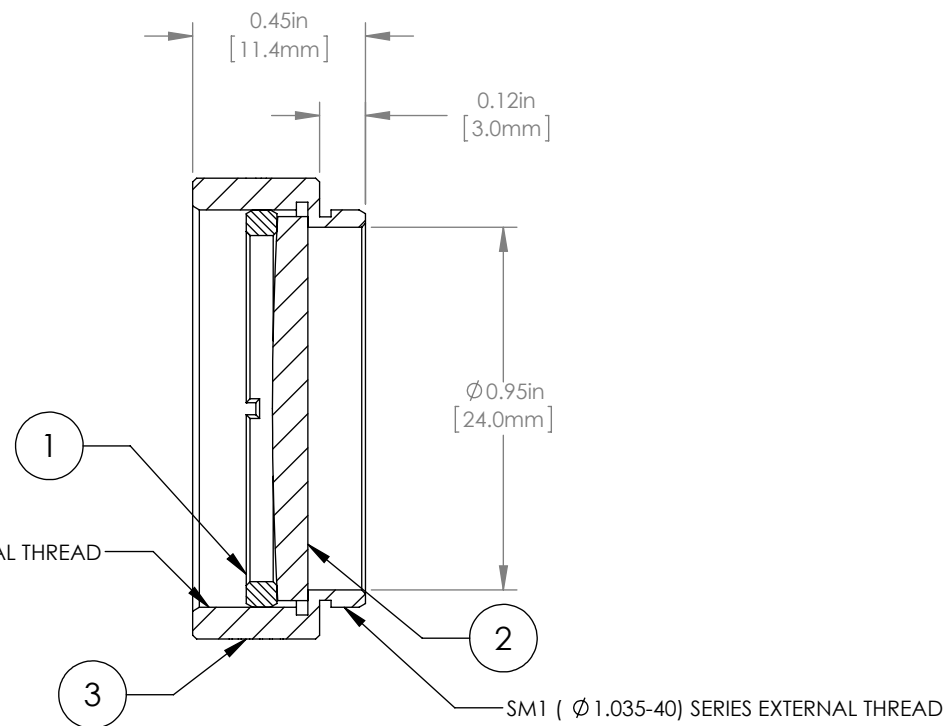
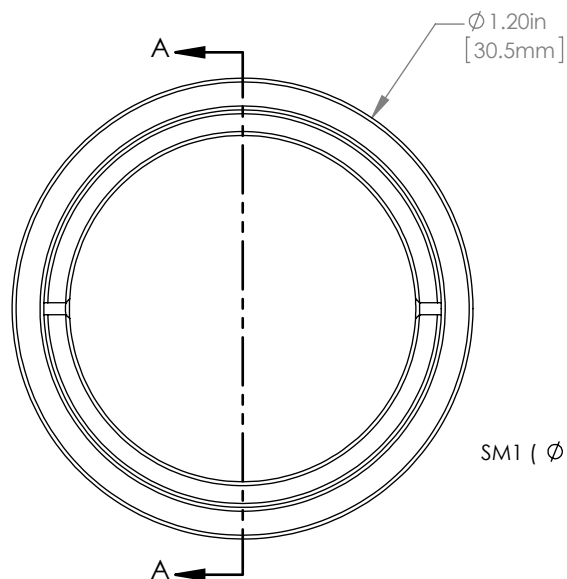


	PART DESCRIPTION	MATERIAL
①	SM1RR	ANODIZED ALUMINUM
②	LA4184	UV FUSED SILICA
③	ENGRAVED HOUSING	ANODIZED ALUMINUM



NOTES/SPECIFICATIONS:

1. DESIGN WAVELENGTH: 546nm
2. FOCAL LENGTH: $f=500.0\text{mm} \pm 1\%$
3. WORKING DISTANCE (REF): 494.6mm
4. CLEAR APERTURE: $> \text{Ø} 22.86\text{mm}$
5. SURFACE QUALITY: 40-20 SCRATCH-DIG

FOR INFORMATION ONLY
NOT FOR MANUFACTURING PURPOSES

DRAWING PROJECTION					
	NAME		DATE	THORLABS www.thorlabs.com Ø 1" MOUNTED PLANO-CONVEX LENS, f=500mm	
DRAWN	GG		13/OCT/15		
APPROVAL	DD		13/OCT/15		
MATERIAL SEE TABLE REV A					
COPYRIGHT © 2015 BY THORLABS				ITEM #	APPROX WEIGHT
VALUES IN PARENTHESIS ARE CALCULATED AND MAY CONTAIN ROUND OFF ERRORS				LA4184-ML	8 g