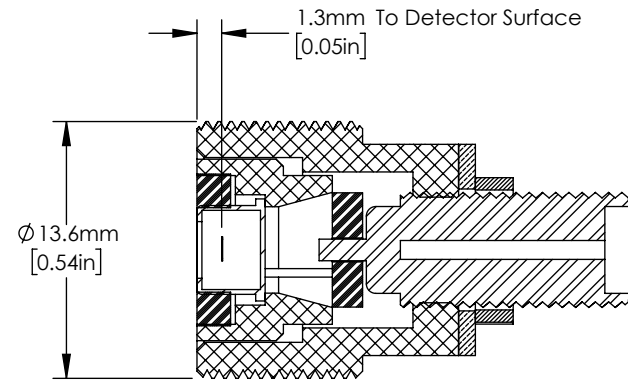
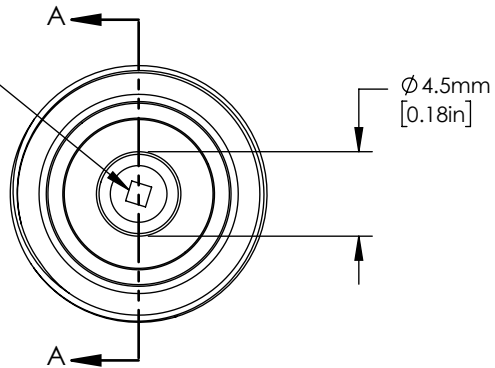
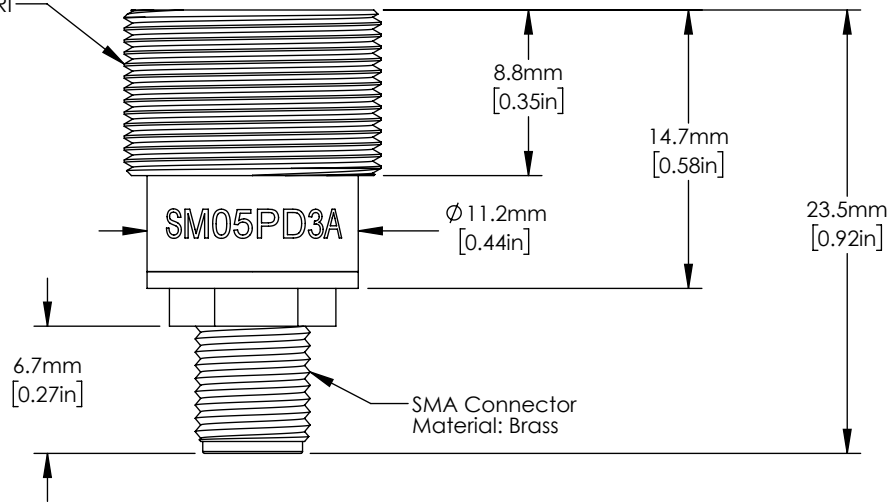


FD11A Silicon Photodiode  
 Active Area: 1.21mm<sup>2</sup>  
 Range: 320-1100 nm  
 Cathode Grounded



SECTION A-A

Housing  
 External Thread  
 SM05 (0.535-40)  
 Material: Black DELRI



FOR INFORMATION ONLY  
 NOT FOR MANUFACTURING PURPOSES

DRAWING PROJECTION

	NAME	DATE
DRAWN	WKC	29/MAR/18
APPROVAL	EC	30/MAR/18

COPYRIGHT © 2018 BY THORLABS

VALUES IN PARENTHESIS ARE CALCULATED AND MAY CONTAIN ROUND-OFF ERRORS

**THORLABS**  
 www.thorlabs.com

SM05 Mounted Si-Photodiode

MATERIAL See Drawing REV B

ITEM # SM05PD3A APPROX WEIGHT .005 kg