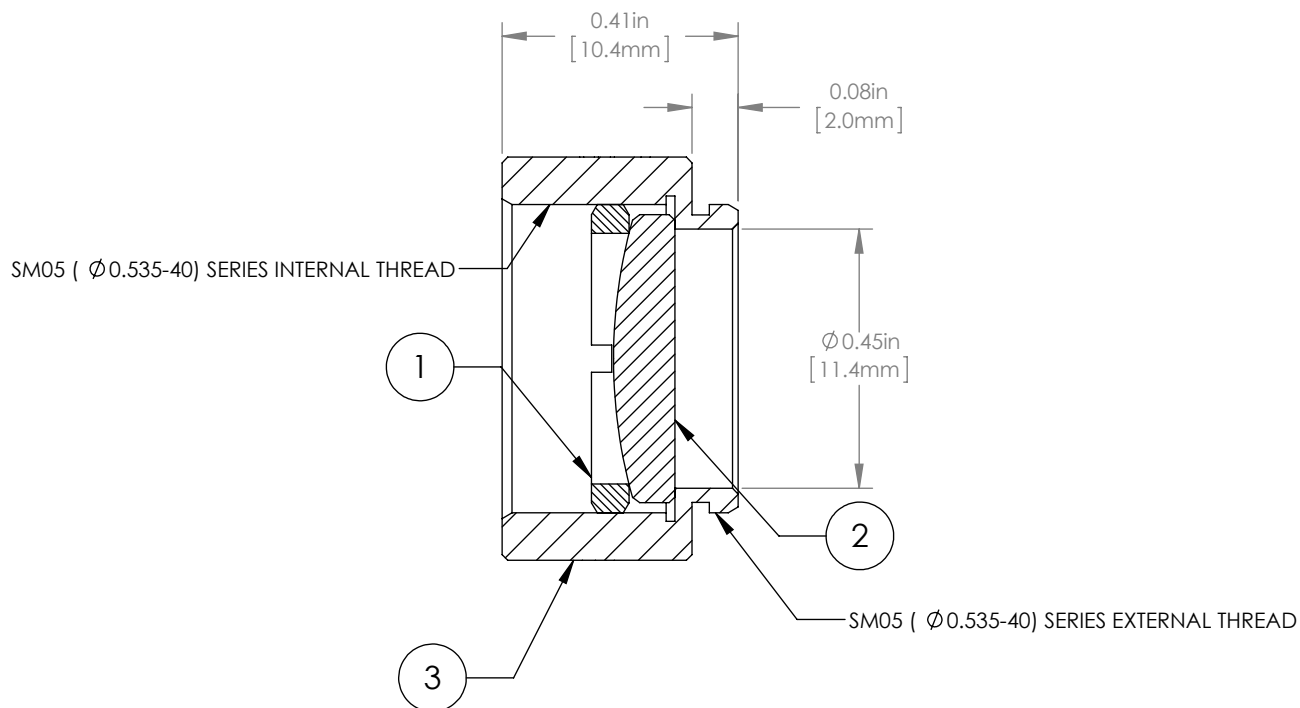
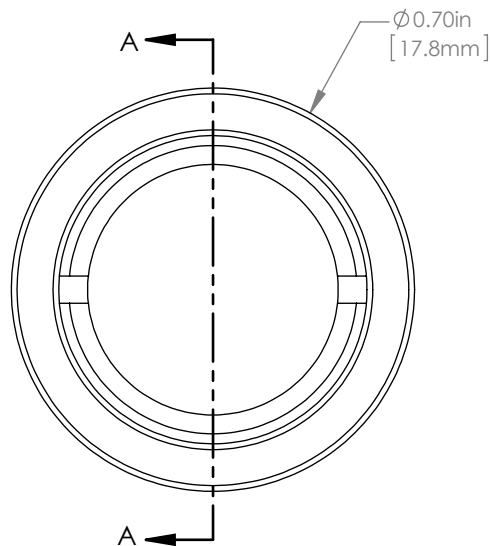
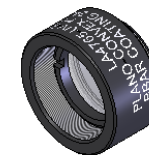


|   | PART DESCRIPTION | MATERIAL          |
|---|------------------|-------------------|
| ① | SM05RR           | ANODIZED ALUMINUM |
| ② | LA4765-UV        | UV FUSED SILICA   |
| ③ | ENGRAVED HOUSING | ANODIZED ALUMINUM |



NOTES/SPECIFICATIONS:

1. DESIGN WAVELENGTH: 546nm
2. FOCAL LENGTH:  $f=50.0\text{mm} \pm 1\%$
3. WORKING DISTANCE (REF): 45.3mm
4. CLEAR APERTURE:  $> \text{Ø} 11.05\text{mm}$
5. SURFACE QUALITY: 40-20 SCRATCH-DIG
6. COATING: BBAR  $R_{\text{avg}} < 0.5\%$  FROM 245-400nm, AOI: 0°, ON OUTER OPTICAL SURFACES

FOR INFORMATION ONLY  
NOT FOR MANUFACTURING PURPOSES

| DRAWING PROJECTION   |      |   |           |              |  | <b>THORLABS</b><br>www.thorlabs.com |               |
|--|------|---|-----------|--------------|--|-------------------------------------|---------------|
| NAME   | DATE | $\text{Ø} 1/2"$ MOUNTED PLANO-CONVEX LENS, $f=50\text{mm}$ , -UV COAT |           |              |  | MATERIAL                            | REV           |
| DRAWN  | GG   | 13/OCT/15   | SEE TABLE |              |  |                                     | A             |
| APPROVAL   | DD   | 13/OCT/15   | ITEM #    |              |  |                                     | APPROX WEIGHT |
| COPYRIGHT © 2015 BY THORLABS   |      |   |           | LA4765-UV-ML |  | 3 g                                 |               |
| <small>VALUES IN PARENTHESIS ARE CALCULATED AND MAY CONTAIN ROUND OFF ERRORS</small> |      |   |           |              |  |                                     |               |