

NOTES:

1. SUBSTRATE MATERIAL:  
BOROFLOAT®

2. COATING (APPLY ACROSS CLEAR APERTURE)

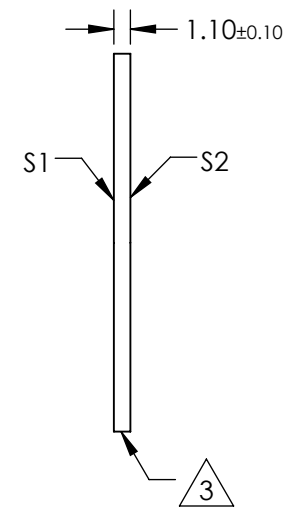
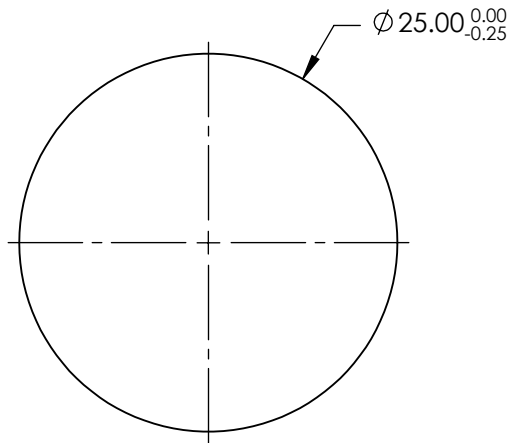
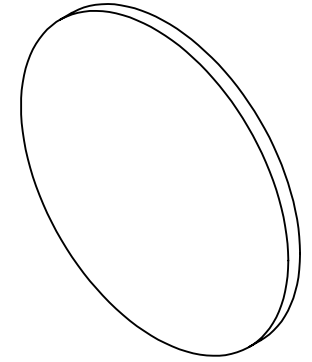
S1: R(avg) <0.5% @ 425 - 675nm

HYDROPHOBIC COATING - REPELS WATER, OIL AND DEBRIS

S2: NONE

3. FINE GRIND SURFACE

4. ROHS COMPLIANT



**FOR INFORMATION ONLY:  
DO NOT MANUFACTURE  
PARTS TO THIS DRAWING**

SPECIFICATIONS SUBJECT TO CHANGE WITHOUT NOTICE  
DIMENSIONS ARE FOR REFERENCE ONLY

	S1	S2
SHAPE	PLANO	PLANO
SURFACE QUALITY	80 - 50	80 - 50
CLEAR APERTURE	Ø22.50	Ø22.50
BEVEL	PROTECTIVE AS NEEDED	PROTECTIVE AS NEEDED

THIRD ANGLE PROJECTION

ALL DIMS IN mm

**EO**® Edmund Optics®

TITLE

WINDOW BORO HYDRO & OLEOPHOBIC 25MM  
TS

DWG NO

34526

SHEET  
1 OF 1