

NOTES:

1. SUBSTRATE:
FUSED SILICA
2. SURFACE S2 TO BE PARALLEL TO S1 TO WITHIN <3 ARCMIN
3. COATING (APPLY ACROSS COATING APERTURE)

S1: R(ABS) > 95% @ 266nm @ 45° AOI
 T(ABS) > 98% @ 532nm @ 45° AOI
 T(ABS) > 98% @ 1064nm @ 45° AOI

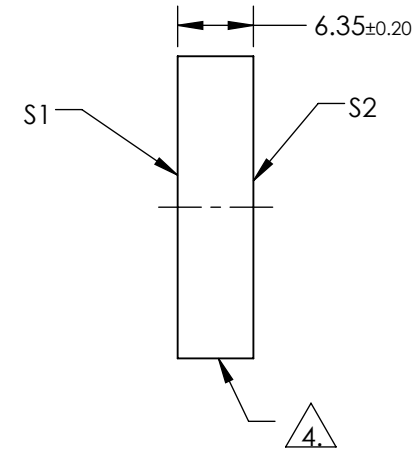
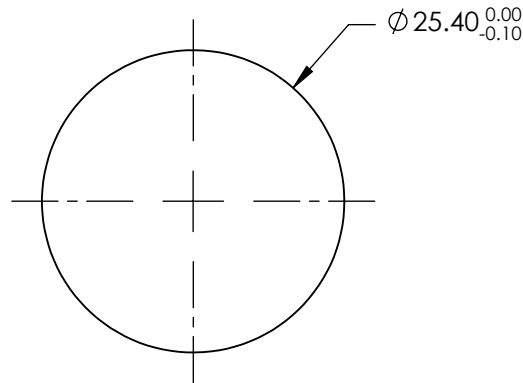
DAMAGE THRESHOLD, PULSED:
 7.5 J/cm² @ 20ns, 20Hz @ 1064nm
 5 J/cm² @ 20ns, 20Hz @ 532nm
 1 J/cm² @ 20ns, 20Hz @ 266nm

S2: R(ABS) < 1.0% @ 1064nm @ 45° AOI
 R(ABS) < 1.0% @ 532nm @ 45° AOI

DAMAGE THRESHOLD, PULSED:
 15 J/cm² @ 20ns, 20Hz @ 1064nm
 10 J/cm² @ 20ns, 20Hz @ 532nm

4. FINE GRIND SURFACE

5. ROHS COMPLIANT



**FOR INFORMATION ONLY:
 DO NOT MANUFACTURE
 PARTS TO THIS DRAWING**

SPECIFICATIONS SUBJECT TO CHANGE WITHOUT NOTICE
 DIMENSIONS ARE FOR REFERENCE ONLY

	S1	S2
SHAPE	PLANO	PLANO
SURFACE ACCURACY P-V AT 632.8nm	0.10 WAVE	0.10 WAVE
SURFACE QUALITY	10-5	10-5
CLEAR APERTURE	Ø22.86	Ø22.86
COATING APERTURE	Ø22.86	Ø22.86
BEVEL	PROTECTIVE AS NEEDED	PROTECTIVE AS NEEDED

THIRD ANGLE PROJECTION

ALL DIMS IN mm

Edmund Optics®

TITLE: Ø25.4mm HS 266R/532, 1064T HARMONIC BEAMSPLITTER

DWG NO: 11546

SHEET 1 OF 1