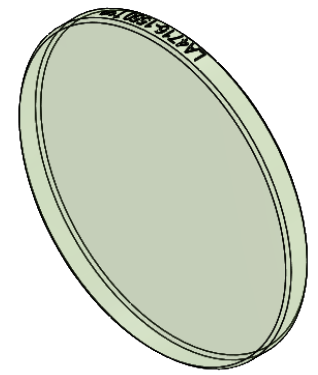


SECTION A-A



ISOMETRIC VIEW  
SCALE: 2:1

NOTES/SPECIFICATIONS:

1. DESIGN WAVELENGTH: 587.6 nm
2. FOCAL LENGTH:  $f=752.6 \text{ mm} \pm 1\%$
3. BACK FOCAL LENGTH(REF):  $bf=751.1 \text{ mm}$
4. CLEAR APERTURE:  $> \varnothing 22.86 \text{ mm}$
5. SURFACE QUALITY: 20-10 SCRATCH-DIG
6. CENTRATION:  $< 3 \text{ arcmin}$
7. DIAMETER TOLERANCE:  $+0.0/-0.1 \text{ mm}$
8. THICKNESS TOLERANCE:  $\pm 0.1 \text{ mm}$
9. COATING: VAR R $<0.25\%$  PER SURFACE FOR 1550 nm, AOI:  $0^\circ$

FOR INFORMATION ONLY  
NOT FOR MANUFACTURING PURPOSES

DRAWING PROJECTION			 <a href="http://www.thorlabs.com">www.thorlabs.com</a>	
	NAME	DATE		
DRAWN	YB	04/JAN/21	$\varnothing 25.4 \text{ mm } f=750 \text{ mm}$ FUSED SILICA PLANO CONVEX LENS, -1550 nm COAT	
APPROVAL	MG	12/JAN/21	MATERIAL	REV
COPYRIGHT © 2021 BY THORLABS <small>VALUES IN PARENTHESIS ARE CALCULATED AND MAY CONTAIN ROUND OFF ERRORS</small>			UV FUSED SILICA	A
			ITEM #	APPROX WEIGHT
			LA4716-1550	2.34 g