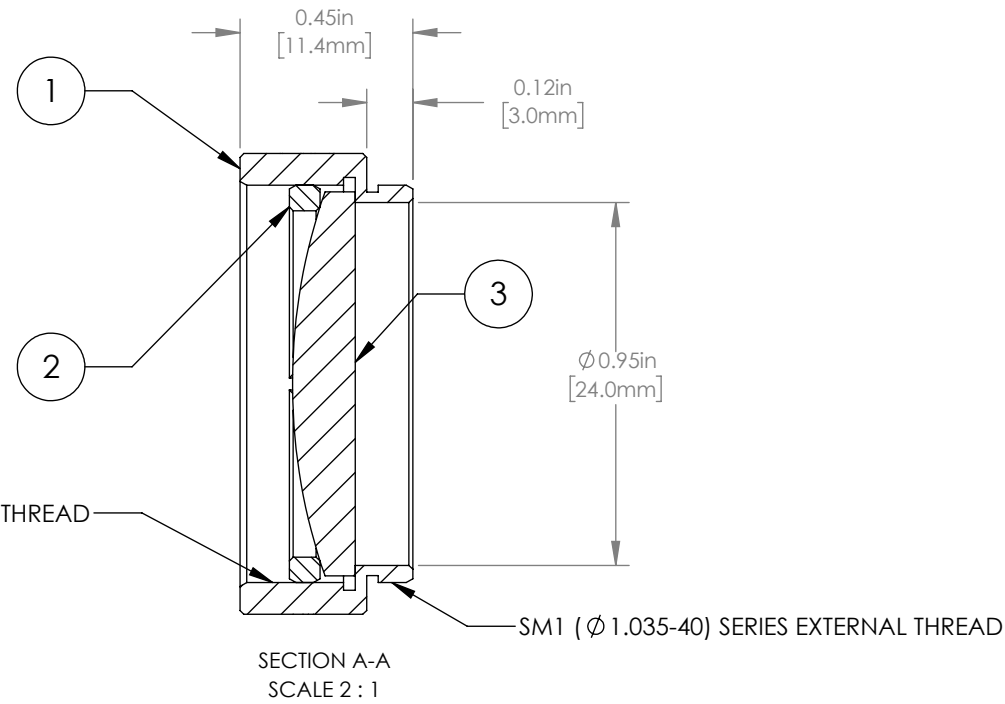
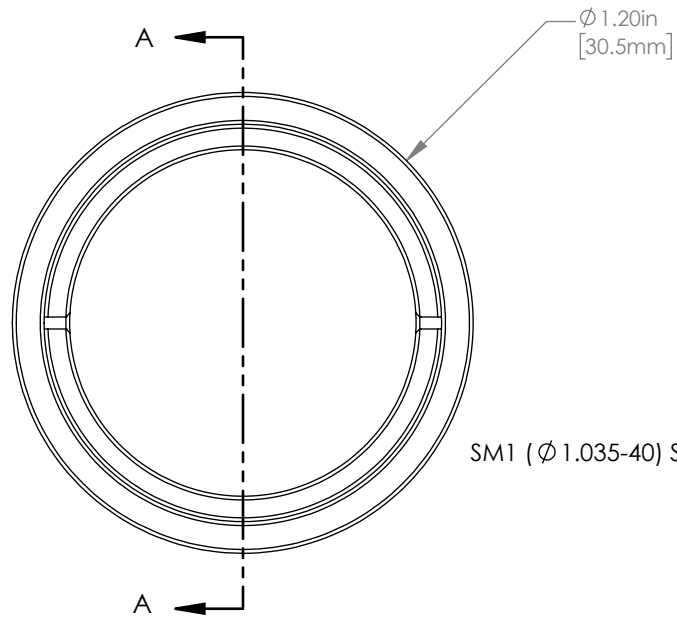


	PART DESCRIPTION	MATERIAL
①	ENGRAVED HOUSING	ANODIZED ALUMINUM
②	SM1RR	ANODIZED ALUMINUM
③	LA1608	N-BK7



NOTES/SPECIFICATIONS:

- DESIGN WAVELENGTH: 587.6 nm
- FOCAL LENGTH:  $f=74.8\text{ mm} \pm 1\%$
- WORKING DISTANCE: 68.2 mm
- CLEAR APERTURE:  $\phi 22.9\text{ mm}$
- SURFACE QUALITY: 40-20 SCRATCH-DIG

FOR INFORMATION ONLY  
NOT FOR MANUFACTURING PURPOSES

DRAWING PROJECTION		THORLABS www.thorlabs.com	
	NAME	DATE	MOUNTED $\phi 25.4\text{ mm}$ , $f = 75.0\text{ mm}$ PLANO CONVEX LENS
DRAWN	GG	22/AUG/19	REV B
APPROVAL	DD	22/AUG/19	MATERIAL SEE TABLE
COPYRIGHT © 2019 BY THORLABS			ITEM #
VALUES IN PARENTHESIS ARE CALCULATED AND MAY CONTAIN ROUND OFF ERRORS			LA1608-ML
			APPROX WEIGHT
			10 g