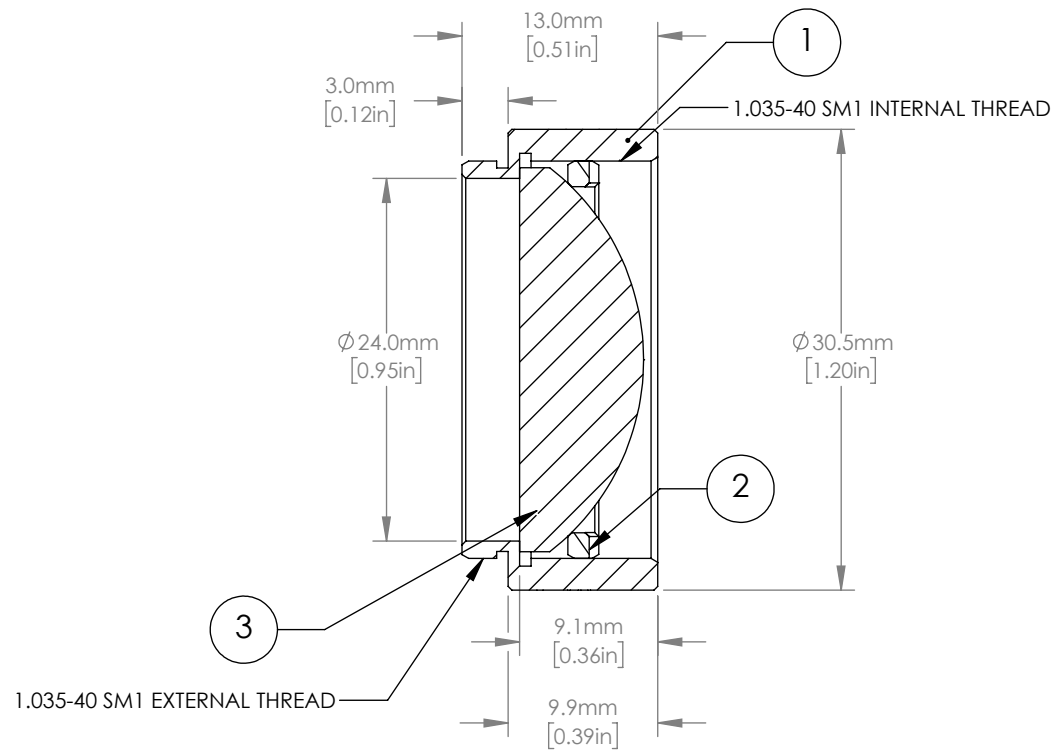
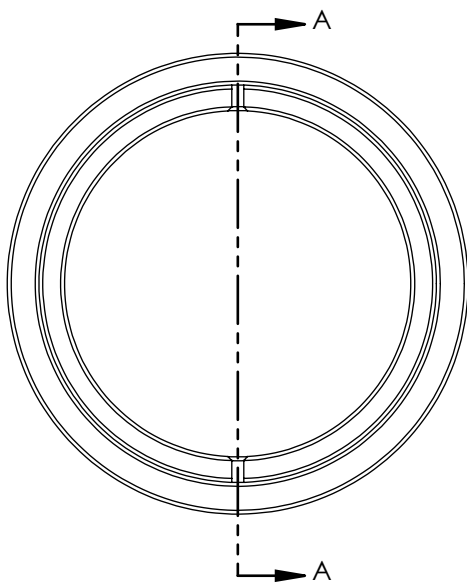


	PART DESCRIPTION	MATERIAL
①	ENGRAVED LENS TUBE	ANODIZED ALUMINUM
②	SM1RR	ANODIZED ALUMINUM
③	LA4052	UV FUSED SILICA



NOTES/SPECIFICATIONS:

- DESIGN WAVELENGTH: 587.6 nm
- FOCAL LENGTH: $f=35.0 \text{ mm} \pm 1\%$
- WORKING DISTANCE: 25.6 mm
- CLEAR APERTURE: >90% OF LENS DIAMETER
- SURFACE QUALITY: 40-20 SCRATCH-DIG

SECTION A-A
SCALE 2:1



DRAWING	NAME	DATE
DRAWN	DFS	06/NOV/20
APPROVAL	BW	12/NOV/20

COPYRIGHT © 2020 BY THORLABS

VALUES IN PARENTHESIS ARE CALCULATED AND MAY CONTAIN ROUND-OFF ERRORS

THORLABS

www.thorlabs.com

$f = 35.0 \text{ mm}$, Ø1", SM1-THREADED MOUNT, PLANO-CONVEX LENS

MATERIAL	SEE TABLE	REV B
----------	-----------	-------

ITEM #	APPROX WEIGHT
LA4052-ML	0.041 kg

FOR INFORMATION ONLY
NOT FOR MANUFACTURING PURPOSES