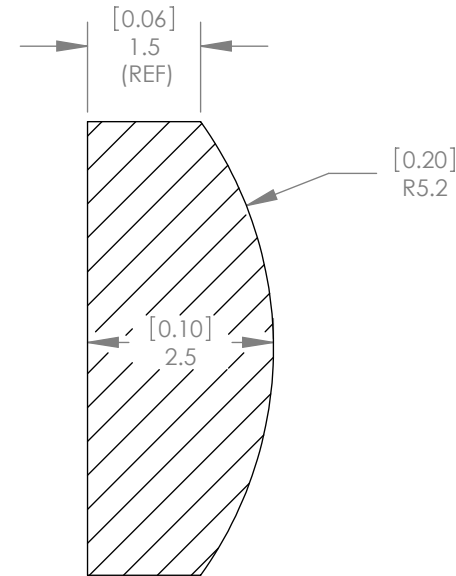
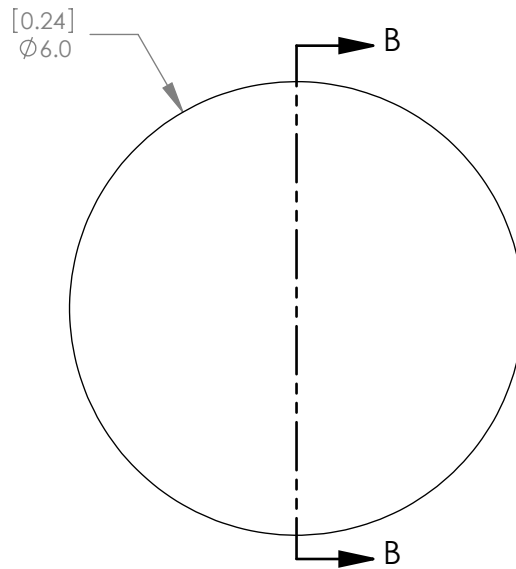


1:1 ISOMETRIC VIEW FOR
REFERENCE ONLY



SECTION B-B

NOTES/SPECIFICATIONS:

DESIGN WAVELENGTHS: 587.6nm
 FOCAL LENGTH: 10.0mm ± 1%
 BACK FOCAL LENGTH (REF): 8.3mm
 CLEAR APERTURE: >90%
 SURFACE QUALITY: 40-20 SCRATCH-DIG
 CENTRATION: <3 arcmin
 DIAMETER TOLERANCE: +0.0/-0.1mm
 THICKNESS TOLERANCE: ± 0.1mm

ALL DIMENSIONS ARE IN THE FORM $\frac{[in]}{mm}$.
 THIS DRAWING IS FOR INFORMATION ONLY
 NOT INTENDED FOR MANUFACTURING

THORLABS INC. PO BOX 366
 NEWTON NJ

TITLE: D=6.0 F=10.0 N-BK7
 PLANO CONVEX LENS

MATERIAL: N-BK7 SIZE A REV. B

SCALE: 10:1 SHEET 1 OF 1

DWG. NO. 3116-E01 PART NO. LA1116

	NAME	DATE
DRAWN	WD	11/19/2009
ENG APPR.	BW	11/24/2009
MFG APPR.	DD	12/11/2009

PROPRIETARY AND CONFIDENTIAL

THE INFORMATION CONTAINED IN THIS DRAWING IS THE SOLE PROPERTY OF THORLABS, INC. ANY REPRODUCTION IN PART OR AS A WHOLE WITHOUT THE WRITTEN PERMISSION OF THORLABS, INC. IS PROHIBITED.