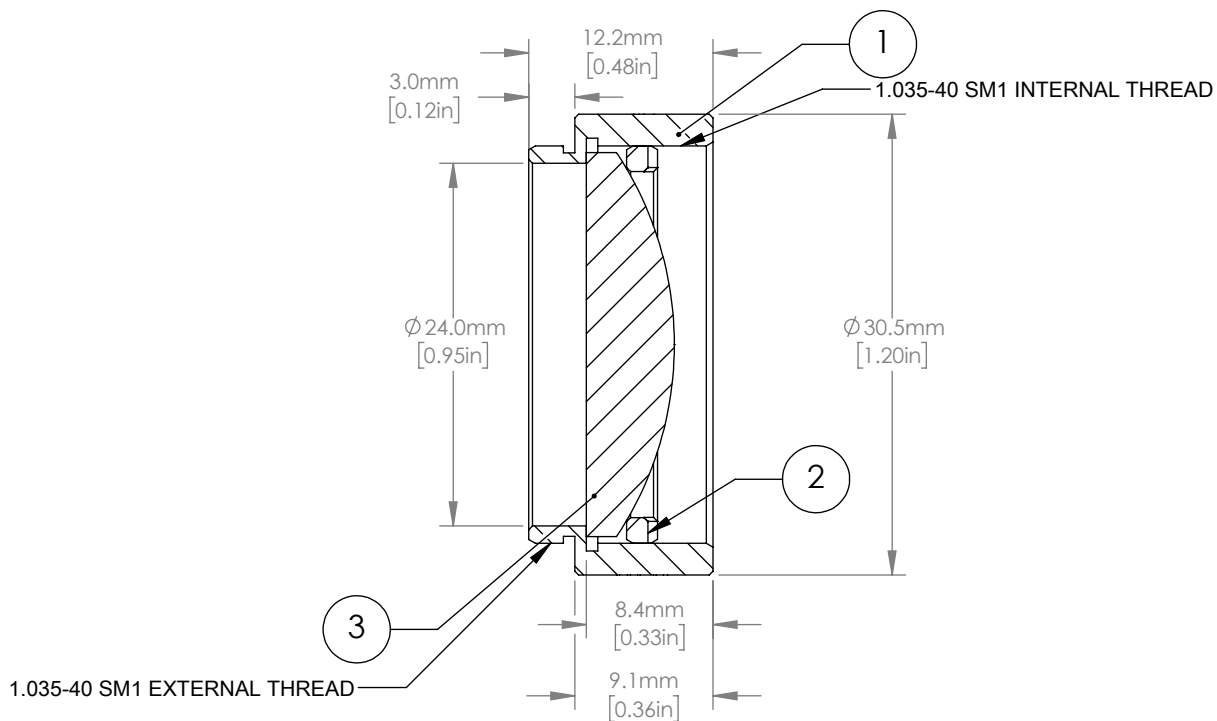
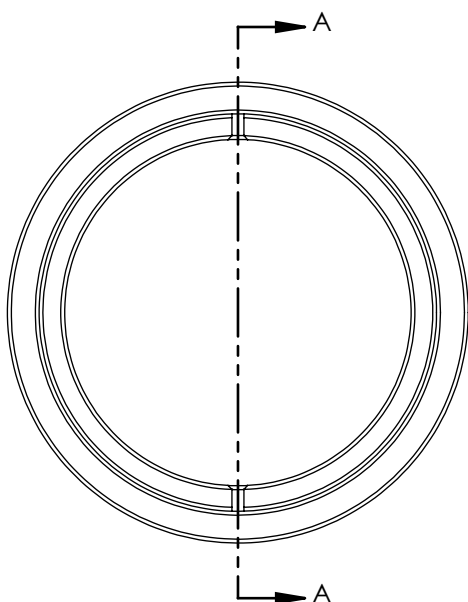


	PART DESCRIPTION	MATERIAL
①	ENGRAVED LENS TUBE	ANODIZED ALUMINUM
②	SM1RR	ANODIZED ALUMINUM
③	LA4148	UV FUSED SILICA



SECTION A-A  
SCALE 2 : 1

NOTES/SPECIFICATIONS:

1. DESIGN WAVELENGTH: 587.6 nm
2. FOCAL LENGTH:  $f=50.0 \text{ mm} \pm 1\%$
3. WORKING DISTANCE: 43.2 mm
4. CLEAR APERTURE: >90% OF LENS DIAMETER
5. SURFACE QUALITY: 40-20 SCRATCH-DIG

FOR INFORMATION ONLY  
NOT FOR MANUFACTURING PURPOSES

DRAWING PROJECTION			<b>THORLABS</b> <a href="http://www.thorlabs.com">www.thorlabs.com</a> $f = 50.0 \text{ mm}, \text{Ø}1", \text{SM1-THREADED MOUNT}, \text{PLANO-CONVEX LENS}$	
NAME	DATE			
DRAWN	DFS	06/NOV/20	MATERIAL	
APPROVAL	BW	12/NOV/20		
COPYRIGHT © 2020 BY THORLABS			SEE TABLE	REV B
VALUES IN PARENTHESIS ARE CALCULATED AND MAY CONTAIN ROUND OFF ERRORS			ITEM #	APPROX WEIGHT
			LA4148-ML	0.030 kg