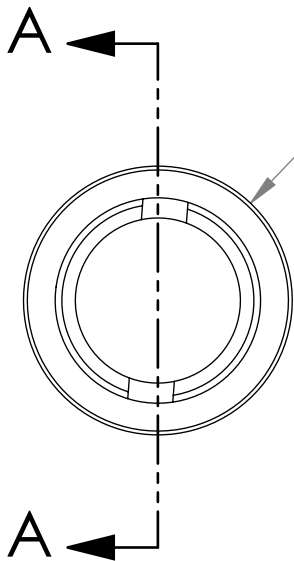
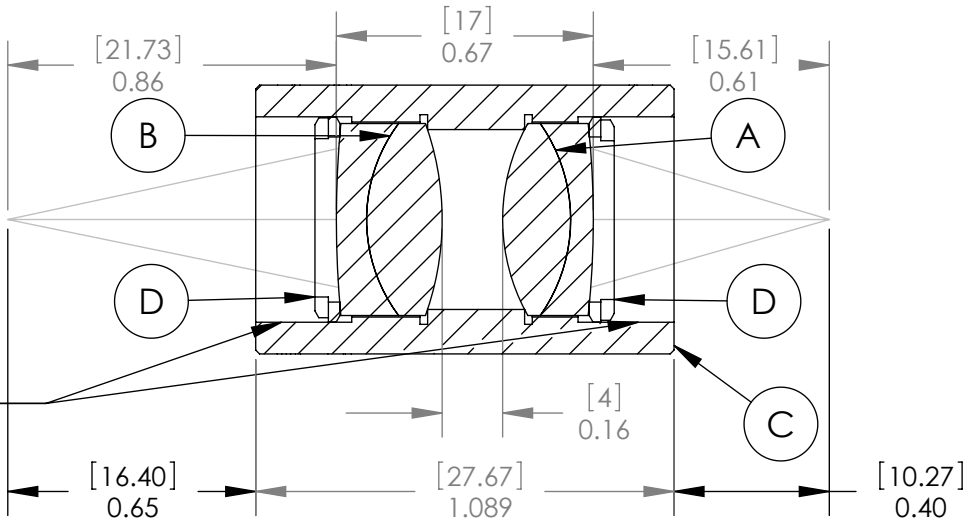


PART	PART NO.	MATERIAL
A	AC127-019-A1	BAFN10-SFL6
B	AC127-025-A1	BAF10-SF10
C	LENS MOUNT	6061-T6 ALUMINUM
D	SM05RR	6061-T6 ALUMINUM



[17.78]
Ø0.70

INTERNAL SM05 THREAD
(0.535-40)



SECTION A-A

SPECIFICATIONS:
 DESIGN WAVELENGTH: 486.1, 587.6 & 656.3nm
 COATING: BBAR 400-700nm
 COATING RANGE: R(AVG)<0.5% FROM 400-700nm
 MAGNIFICATION: 1:1.3

Dimensions are in $\frac{[mm]}{in}$

NOTE:
 FOR INFORMATION ONLY. NOT INTENDED FOR MANUFACTURING.

THORLABS INC. PO BOX 366
 NEWTON NJ

TITLE: MATCHED ACHROMAT PAIR
 F1=19mm, F2=25mm

MATERIAL: SEE TABLE SIZE A REV. C

SCALE: 2:1 SHEET 1 OF 1

DWG. NO. 13311-E01 PART NO. MAP051925-A1

	NAME	DATE
DRAWN	AP	04/14/06
ENG APPR.	TO	04/14/06
MFG APPR.	TO	04/14/06

PROPRIETARY AND CONFIDENTIAL

THE INFORMATION CONTAINED IN THIS
 DRAWING IS THE SOLE PROPERTY OF
 THORLABS, INC. ANY REPRODUCTION
 IN PART OR AS A WHOLE WITHOUT
 THE WRITTEN PERMISSION OF
 THORLABS, INC. IS PROHIBITED.