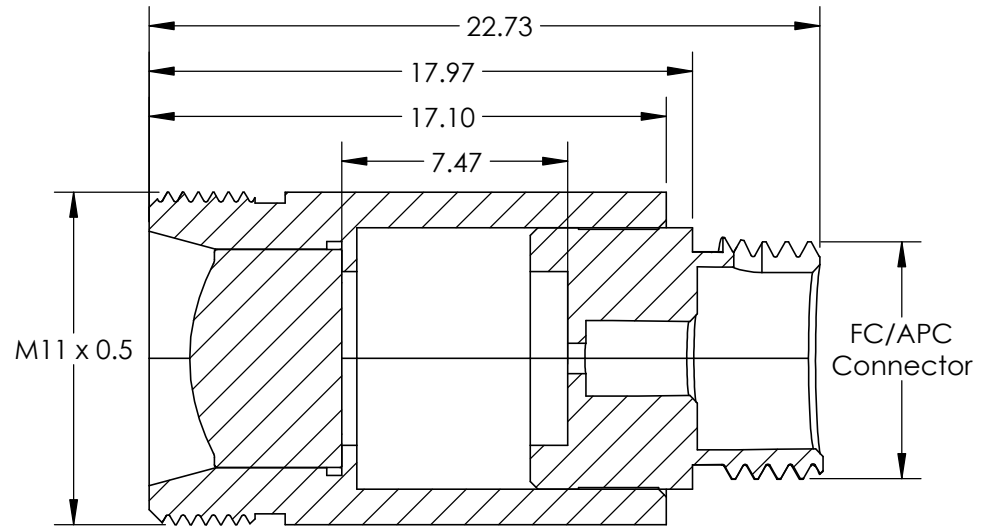
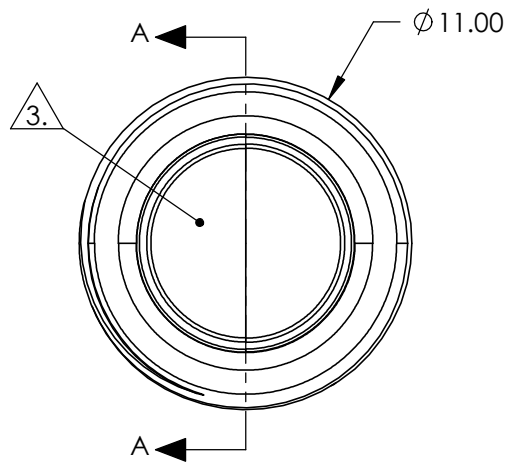
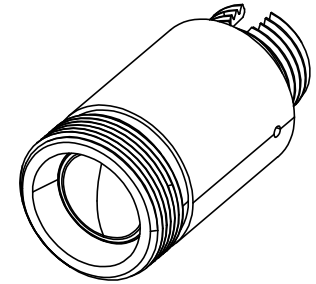


NOTES:

1. MATERIAL
HOUSING: STAINLESS STEEL
LENS: D-ZK3
2. COATING
S1 & S2: R(ABS) <1.0% @ 600 - 1050nm
3. CLEAR APERTURE: 5.50mm
4. ALIGNMENT WAVELENGTH: 633nm
5. RoHS: COMPLIANT



SECTION A-A

SPECIFICATIONS SUBJECT TO CHANGE WITHOUT NOTICE
DIMENSIONS ARE FOR REFERENCE ONLY



**FOR INFORMATION ONLY:
DO NOT MANUFACTURE
PARTS TO THIS DRAWING**

| | | | | |
|------------------------|----|--------|---|-----------------|
| THIRD ANGLE PROJECTION | | TITLE | LightPath 354220 633nm Alignment, 0.25 NA Fiber Collimator w/ FC/APC Connector | |
| ALL DIMS IN | mm | DWG NO | 16706 | SHEET 1 OF 1 |