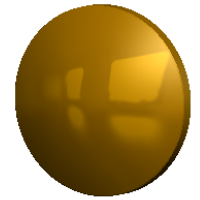


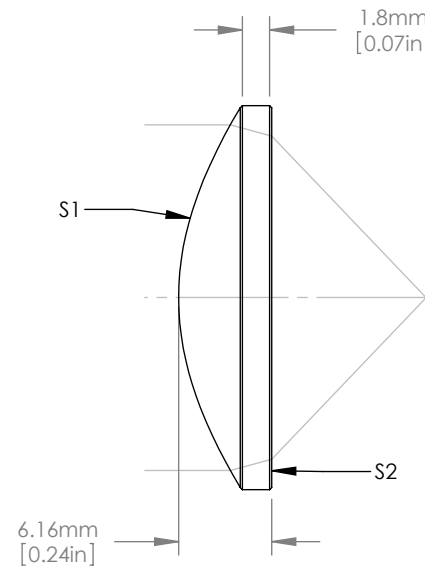
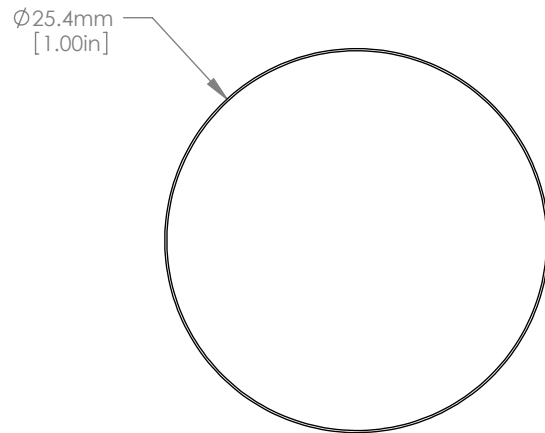
ASPHERIC COEFFICIENTS

	R	k	A ₂	A ₄	A ₆
S1	17.804	-1.000000	0	-1.4335797E-05	0
S2	INFINITE	-	-	-	-



1:1 ISOMETRIC VIEW

$$z = \frac{Y^2}{R(1 + \sqrt{1 - (1+k)Y^2/R^2})} + A_2Y^2 + A_4Y^4 + A_6Y^6$$



NOTES/SPECIFICATIONS

DESIGN WAVELENGTH: 10.6μm
 MATERIAL: ZINC SELENIDE
 REFRACTIVE INDEX: 2.4027 ±0.0005 AT 10.6μm
 EFFECTIVE FOCAL LENGTH: 12.7mm ±1%
 CLEAR APERTURE: >90% OF DIAMETER
 NUMERICAL APERTURE: 0.67
 BACK FOCAL LENGTH: 10.22mm
 SURFACE QUALITY: 80-50 SCRATCH DIG
 WEDGE: < 3 arcmin
 DIAMETER TOLERANCE: +0.00mm/-0.10mm
 CENTER THICKNESS TOLERANCE: ±0.10mm
 COATING (S1&S2): BBAR Ravg<1.5% FROM 8-12μm

FOR INFORMATION ONLY
 NOT FOR MANUFACTURING PURPOSES

DRAWING PROJECTION			THORLABS www.thorlabs.com	
NAME	DATE	ZnSe ASPHERE, EFL=12.7mm WAVELENGTH RANGE: 8-12μm		
DRAWN	SFG	01/SEP/10	MATERIAL	REV
APPROVAL	DD	07/SEP/10	CVD LASER GRADE ZnSe	A
COPYRIGHT © 2010 BY THORLABS			ITEM #	APPROX WEIGHT
VALUES IN PARENTHESIS ARE CALCULATED AND MAY CONTAIN ROUND OFF ERRORS			AL72512-F	0.01 kg