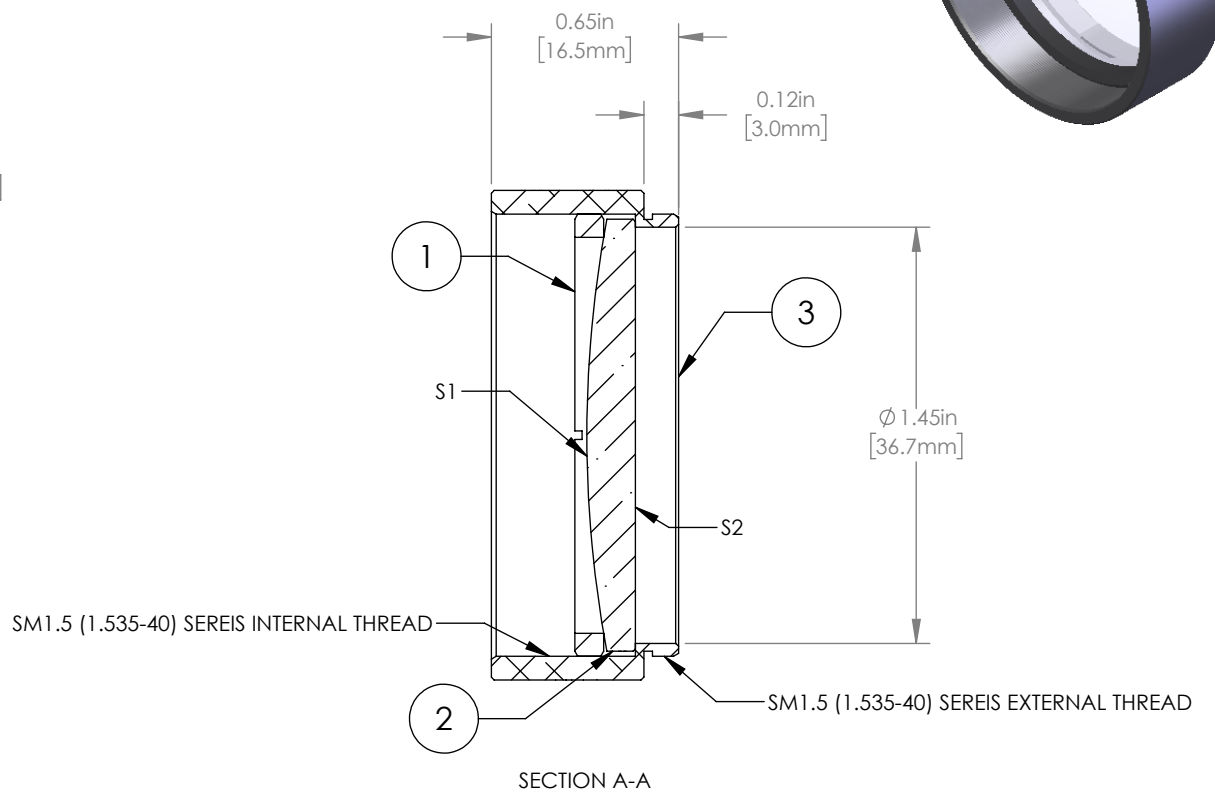
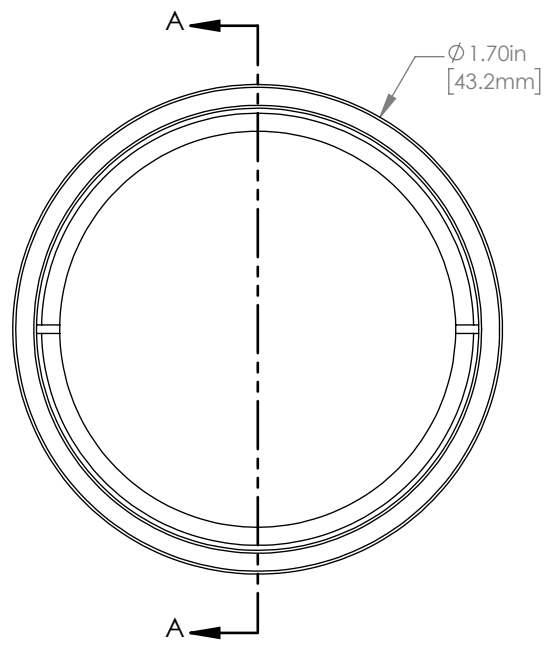
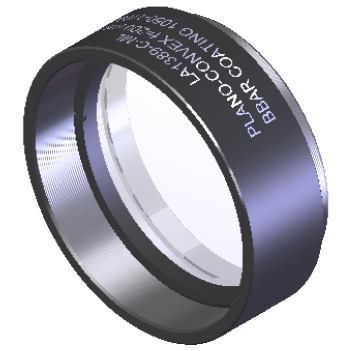


|   | PART DESCRIPTION | MATERIAL           |
|---|------------------|--------------------|
| ① | SM1.5RR          | ANODIZED ALUMINUM  |
| ② | LA1389-C         | N-BK7              |
| ③ | ENGRAVED HOUSING | ANODIZED ALUMINIUM |



NOTES/SPECIFICATIONS:

- DESIGN WAVELENGTH: 587.6 nm
- FOCAL LENGTH:  $f=200.0\text{ mm} \pm 1\%$
- WORKING DISTANCE (REF): 194.2 mm
- CLEAR APERTURE:  $>\phi 34.29\text{ mm}$
- SURFACE QUALITY: 40-20 SCRATCH-DIG
- COATING (S1 & S2): BBAR 1050-1700 nm,  $R_{\text{avg}} < 0.5\%$ , AT  $0^\circ$  AOI

FOR INFORMATION ONLY  
NOT FOR MANUFACTURING PURPOSES

| DRAWING PROJECTION   |      |           | THORLABS<br>www.thorlabs.com   |               |
|--|------|-----------|--|---------------|
|  | NAME | DATE      | MOUNTED $\phi 38.1\text{ mm}$ $f=200.0\text{ mm}$ N-BK7<br>PLANO CONVEX LENS, -C COATING |               |
| DRAWN  | CP   | 19/NOV/19 | MATERIAL   |               |
| APPROVAL   | DD   | 19/NOV/19 | SEE TABLE  |               |
| COPYRIGHT © 2020 BY THORLABS   |      |           | ITEM #   | APPROX WEIGHT |
| VALUES IN PARENTHESIS ARE CALCULATED<br>AND MAY CONTAIN ROUND OFF ERRORS |      |           | LA1389-C-ML  | 21 g          |
|  |      |           | REV  | A             |