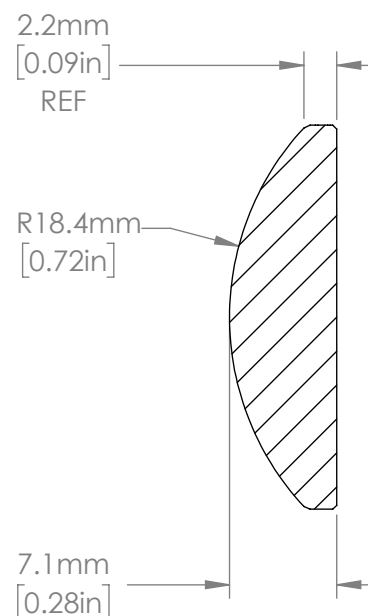
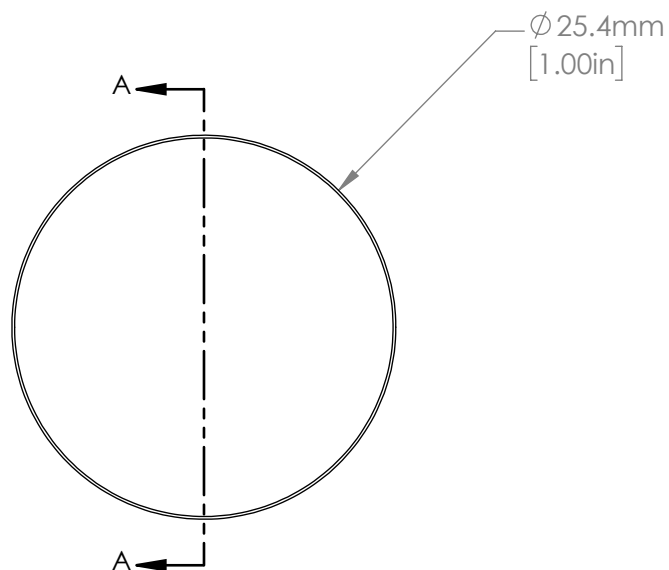


ISOMETRIC VIEW  
SCALE: 2:1



SECTION A-A

NOTES/SPECIFICATIONS:

1. DESIGN WAVELENGTH: 587.6 nm
2. FOCAL LENGTH:  $f=40.1 \text{ mm} \pm 1\%$
3. BACK FOCAL LENGTH(REF):  $bf=35.3 \text{ mm}$
4. CLEAR APERTURE:  $> \phi 22.86 \text{ mm}$
5. SURFACE QUALITY: 20-10 SCRATCH-DIG
6. CENTRATION:  $< 3 \text{ arcmin}$
7. DIAMETER TOLERANCE:  $+0.0/-0.1 \text{ mm}$
8. THICKNESS TOLERANCE:  $\pm 0.1 \text{ mm}$
9. COATING: VAR R<0.25% PER SURFACE FOR 633 nm

FOR INFORMATION ONLY  
NOT FOR MANUFACTURING PURPOSES

DRAWING PROJECTION			 <a href="http://www.thorlabs.com">www.thorlabs.com</a>	
NAME	DATE			
DRAWN	YB	26/NOV/19	$\phi$ 25.4 mm $f=40 \text{ mm}$ FUSED SILICA PLANO CONVEX LENS, -633 nm COAT	
APPROVAL	ST	11/DEC/19	MATERIAL	REV
COPYRIGHT © 2019 BY THORLABS <small>VALUES IN PARENTHESIS ARE CALCULATED AND MAY CONTAIN ROUND OFF ERRORS</small>			UV FUSED SILICA	A
ITEM #			APPROX WEIGHT	
LA4306-633			5.21 g	