

NOTES:

1. SUBSTRATE:
SAPPHIRE (AL₂O₃)
2. SURFACE S2 TO BE PARALLEL WITH SURFACE S1 TO WITHIN ≤ 3.5 ARCMIN
3. COATING (APPLY ACROSS CLEAR APERTURE)

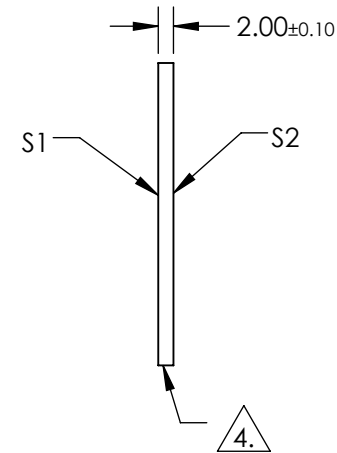
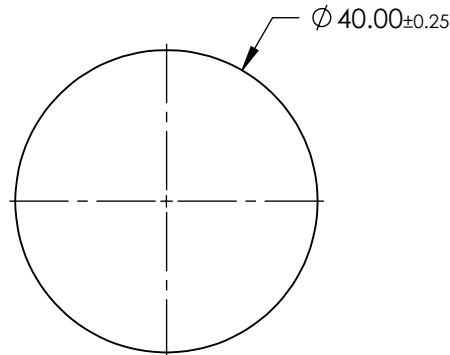
S1 & S2: R(AVG) <1% @ 1650 - 3000nm
R(ABS) <2% @ 1650 - 3000nm



FINE GRIND SURFACE

5. ROHS COMPLIANT

**FOR INFORMATION ONLY:
DO NOT MANUFACTURE
PARTS TO THIS DRAWING**



| | S1 | S2 |
|---|----------------------|----------------------|
| SHAPE | PLANO | PLANO |
| CLEAR APERTURE | Ø36.00 | Ø36.00 |
| SURFACE FLATNESS | 2λ | 2λ |
| SURFACE ROUGHNESS | 0.1 MICRONS PER INCH | 0.1 MICRONS PER INCH |
| SURFACE QUALITY | 80-50 | 80-50 |
| BIREFRINGENCE (n _o -n _e) | 0.008 | 0.008 |
| BEVEL | PROTECTIVE AS NEEDED | PROTECTIVE AS NEEDED |

SPECIFICATIONS SUBJECT TO CHANGE WITHOUT NOTICE
DIMENSIONS ARE FOR REFERENCE ONLY

EO® Edmund Optics®



ALL DIMS IN

mm

TITLE

40mm DIAMETER, BBAR (1650-3000nm) AR
COATED SAPPHIRE WINDOW

DWG NO

15998

SHEET
1 OF 1