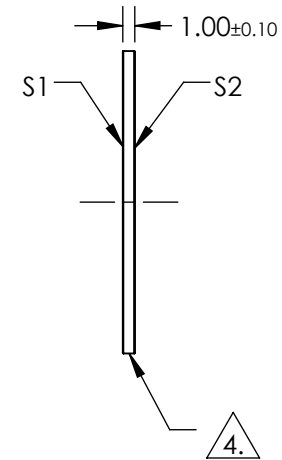
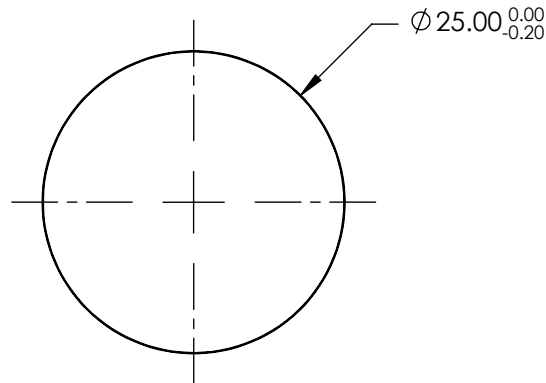


NOTES:

1. SUBSTRATE:
UV GRADE FUSED SILICA
2. COATING (APPLY ACROSS COATING APERTURE):
S1 & S2: UV-AR (250-425nm)
R(ABS) ≤1.0% @ 250 - 425nm
R(AVG) ≤0.75% @ 250 - 425nm
R(AVG) ≤0.5% @ 370 - 420nm
3. SURFACE S2 TO BE PARALLEL TO SURFACE S1 TO WITHIN <5 ARCSEC

△ 4. FINE GRIND SURFACE

5. ROHS COMPLIANT

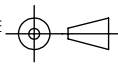


**FOR INFORMATION ONLY:
DO NOT MANUFACTURE
PARTS TO THIS DRAWING**

SPECIFICATIONS SUBJECT TO CHANGE WITHOUT NOTICE
DIMENSIONS ARE FOR REFERENCE ONLY

EO® Edmund Optics®

	S1	S2
SHAPE	PLANO	PLANO
SURFACE QUALITY	20-10	20-10
CLEAR APERTURE	Ø20.00	Ø20.00
BEVEL	PROTECTIVE AS NEEDED	PROTECTIVE AS NEEDED

THIRD ANGLE PROJECTION 

ALL DIMS IN mm

TITLE	25mm Dia., 1mm Thick, UV-AR Coated $\lambda/10$ Fused Silica Window	
DWG NO	11879	SHEET 1 OF 1