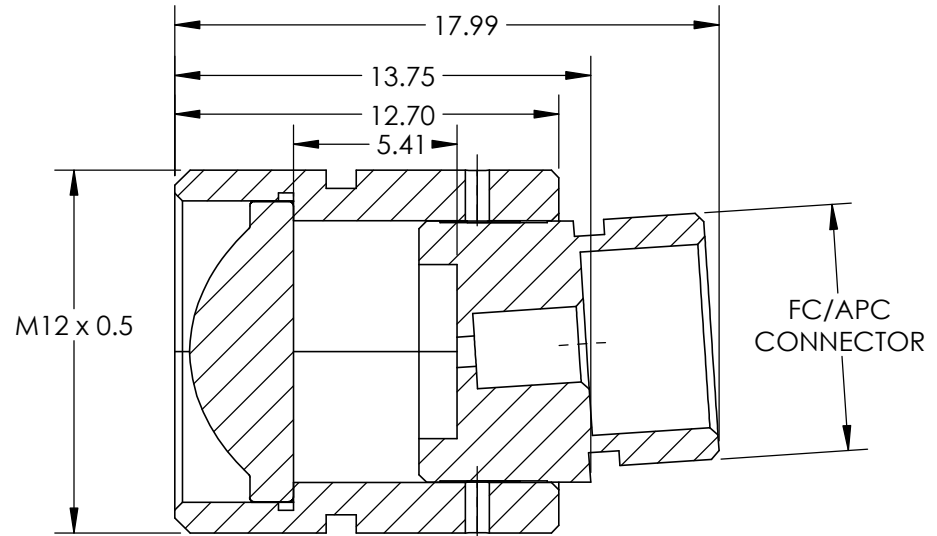
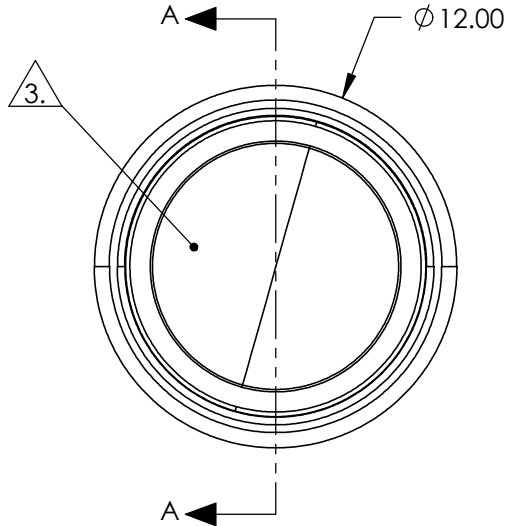
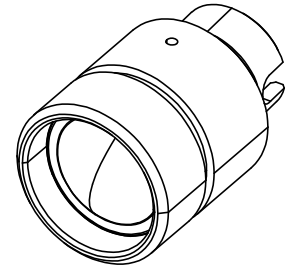


NOTES:

1. MATERIAL
HOUSING: STAINLESS STEEL
LENS: D-ZK3
2. COATING
S1 & S2: R(ABS) <1.0% @ 600 - 1050nm
3. CLEAR APERTURE: 8.00mm
4. ALIGNMENT WAVELENGTH: 633nm
5. RoHS: COMPLIANT



SECTION A-A

SPECIFICATIONS SUBJECT TO CHANGE WITHOUT NOTICE
DIMENSIONS ARE FOR REFERENCE ONLY

**FOR INFORMATION ONLY:
DO NOT MANUFACTURE
PARTS TO THIS DRAWING**

EO® Edmund Optics®

THIRD ANGLE PROJECTION 	TITLE	LightPath 354240 633nm Alignment, 0.50 NA Fiber Collimator w/ FC/APC Connector	
	ALL DIMS IN	mm	DWG NO 16710