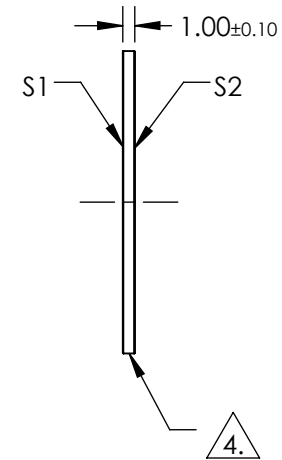
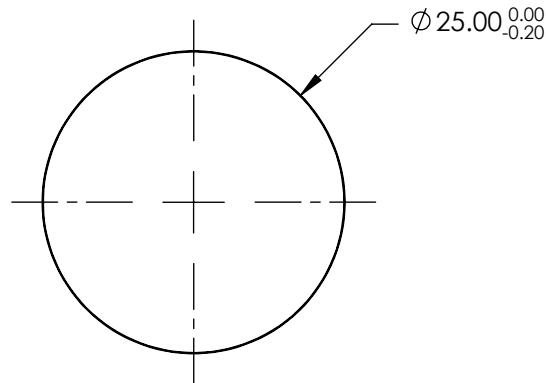


NOTES:

1. SUBSTRATE:
UV GRADE FUSED SILICA
2. COATING (APPLY ACROSS COATING APERTURE):
S1 & S2: VIS-EXT (350-700nm)
R(AVG) ≤ 0.5% FROM 350-700nm @ 0° AOI
3. SURFACE S2 TO BE PARALLEL TO SURFACE S1 TO WITHIN <5 ARCSEC
4. FINE GRIND SURFACE
5. ROHS COMPLIANT

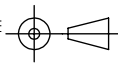


**FOR INFORMATION ONLY:
DO NOT MANUFACTURE
PARTS TO THIS DRAWING**

SPECIFICATIONS SUBJECT TO CHANGE WITHOUT NOTICE
DIMENSIONS ARE FOR REFERENCE ONLY

EO® Edmund Optics®

	S1	S2
SHAPE	PLANO	PLANO
SURFACE QUALITY	20-10	20-10
CLEAR APERTURE	$\phi 20.00$	$\phi 20.00$
BEVEL	PROTECTIVE AS NEEDED	PROTECTIVE AS NEEDED

THIRD ANGLE PROJECTION 

ALL DIMS IN mm

TITLE	25mm Dia., 1mm Thick, VIS-EXT Coated $\lambda/10$ Fused Silica Window	
DWG NO	13336	SHEET 1 OF 1