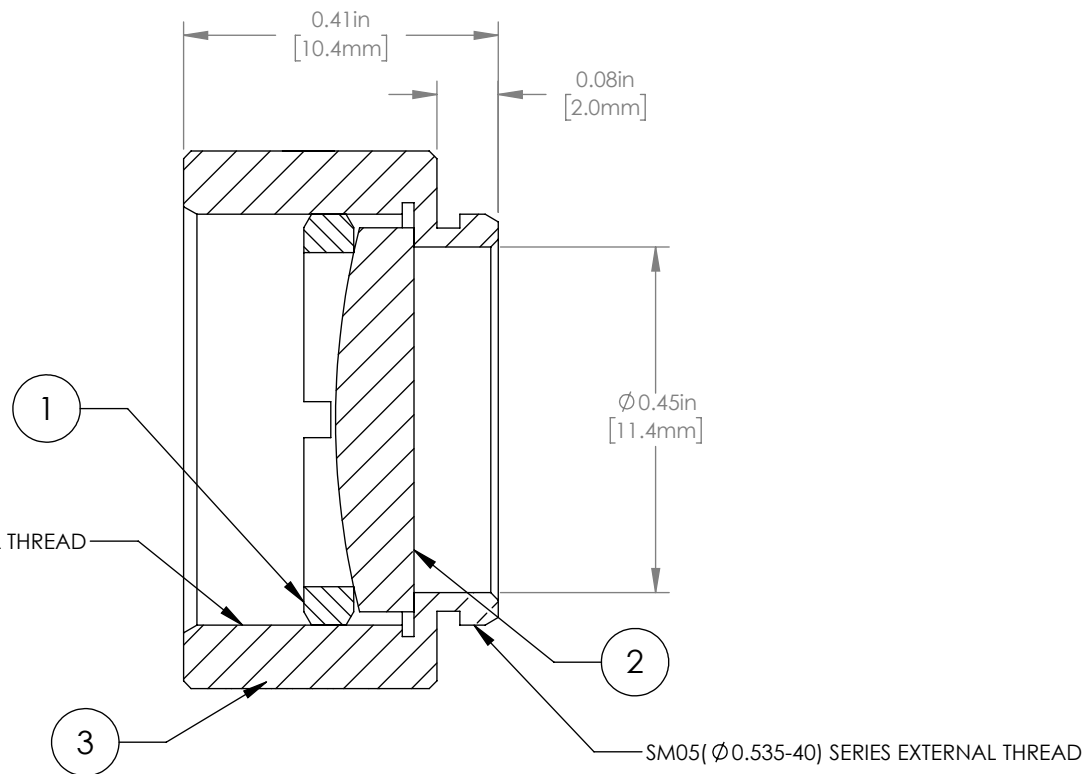
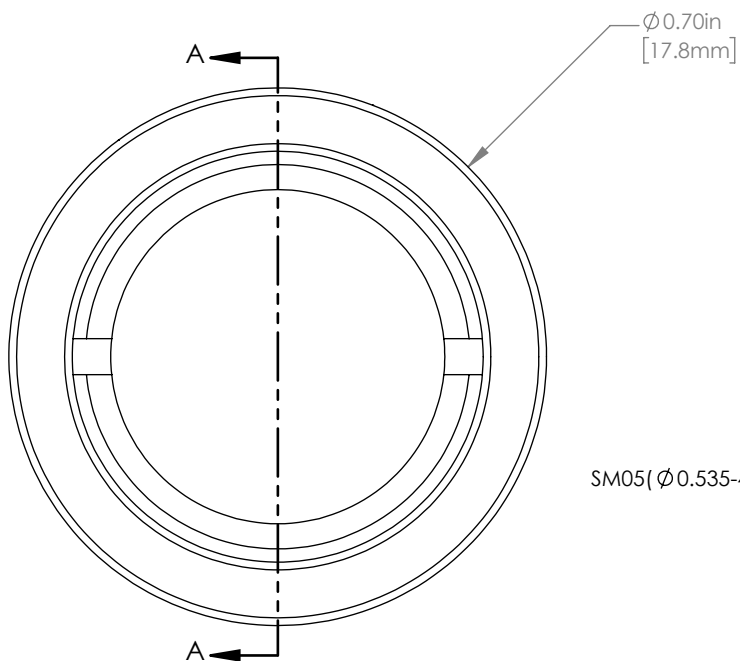
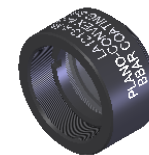


	PART DESCRIPTION	MATERIAL
①	SM05RR	ANODIZED ALUMINUM
②	LA1213-A	N-BK7
③	ENGRAVED HOUSING	ANODIZED ALUMINUM



NOTES/SPECIFICATIONS:

- DESIGN WAVELENGTH: 587.6nm
- FOCAL LENGTH: $f=49.8\text{mm} \pm 1\%$
- WORKING DISTANCE (REF): 45.3mm
- CLEAR APERTURE: $> \phi 11.4\text{mm}$
- SURFACE QUALITY: 40-20 SCRATCH-DIG
- CENTRATION: $< 3\text{arcmin}$
- COATING: BBAR $R_{\text{avg}} < 0.5\%$ FROM 350-700nm, AOI: 0°

FOR INFORMATION ONLY
NOT FOR MANUFACTURING PURPOSES

DRAWING PROJECTION				 www.thorlabs.com	
NAME	DATE	$\phi 1/2"$ MOUNTED PLANO CONVEX LENS, $f=50\text{mm}$, -A COAT		MATERIAL	
DRAWN	GG	07/SEP/17	SEE TABLE		REV B
APPROVAL	DD	07/SEP/17	ITEM #		APPROX WEIGHT
COPYRIGHT © 2017 BY THORLABS <small>VALUES IN PARENTHESIS ARE CALCULATED AND MAY CONTAIN ROUND OFF ERRORS</small>			LA1213-A-ML		4 g