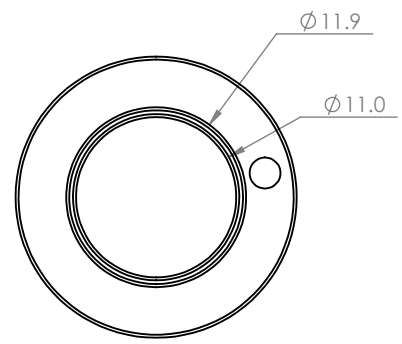
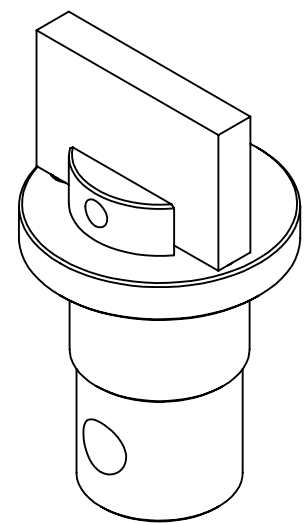
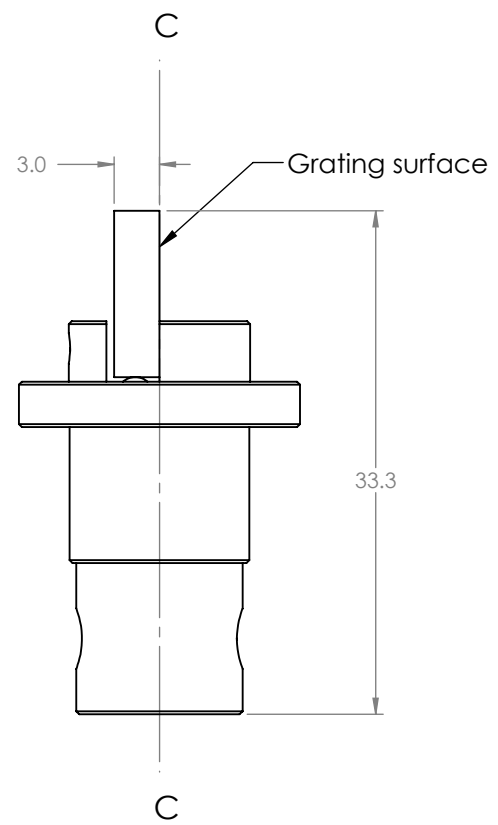
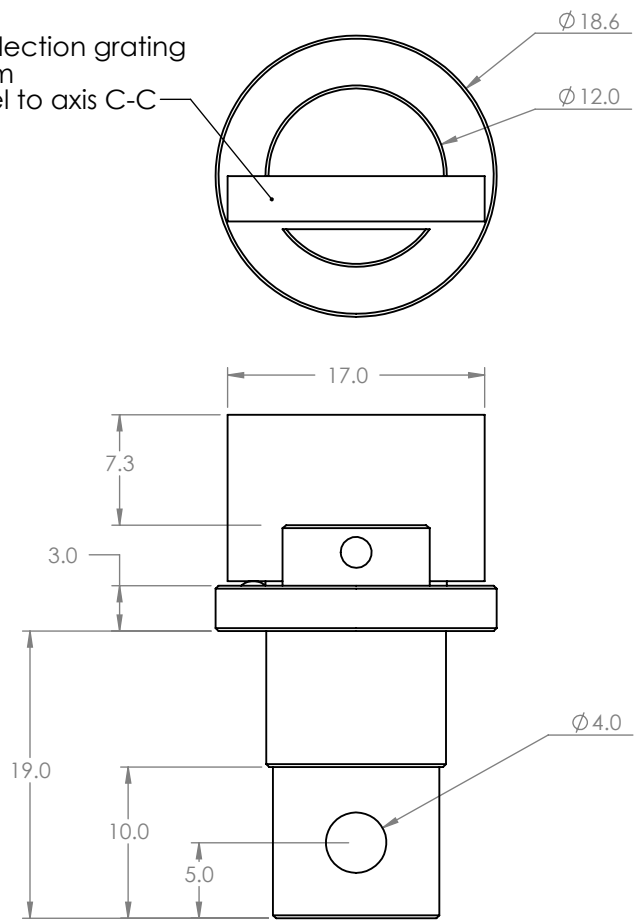



Holographic reflection grating  
900grooves /mm  
Grooves parallel to axis C-C



UNLESS OTHERWISE SPECIFIED: DIMENSIONS ARE IN MM. TOLERANCES ARE: DECIMALS .XXX ± 0.025 .XX ± 0.075 .X ± 0.125 REMOVE ALL BURRS AND BREAK SHARP EDGES 0.1 MAX.					Thorlabs Quantum Electronics 10335 GUILFORD ROAD, JESSUP MD 20794		
			THIRD ANGLE PROJECTION		TLK-G0900M		
			APPROVALS	DATE			
MATERIAL	stainless / glass	DRAWN	AD	5/4/10	SIZE A Doclog No. 21052 REV. A		
FINISH	as noted	CHECKED					
WEIGHT	24.57 grammes	ENGINEER			SCALE 2:1 SHEET 1 OF 1		
		APPROV					
		DO NOT SCALE DRAWING					
4		3			2 1		