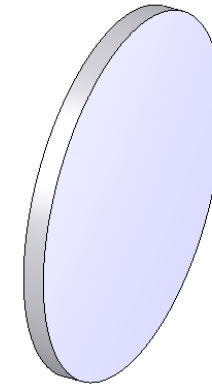
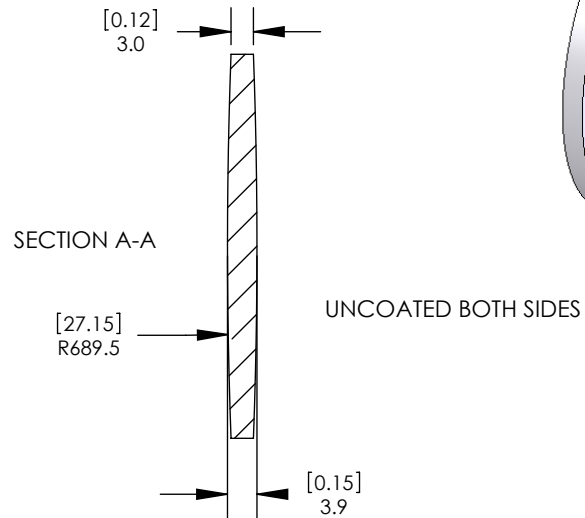
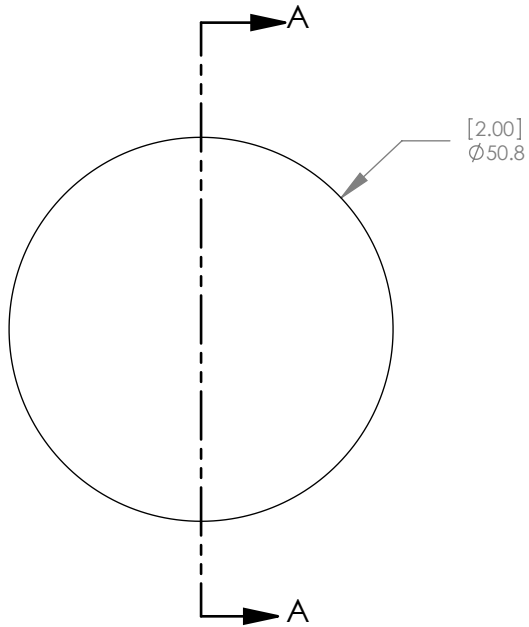


REV. #	DESCRIPTION:	NAME/DATE:



FOCAL LENGTH: 750.0mm \pm 1%
 BACK FOCAL LENGTH: 748.6mm
 INDEX: 1.460 @ 588nm
 DESIGN WAVELENGTH: 588nm
 SCRATCH/DIG: 40/20
 DIAMETER TOLERANCE: +0.00mm/-0.10mm
 CLEAR APERTURE: >90% OF DIAMETER
 CENTRATION: 3 arcmin

ALL DIMENSIONS IN
MILLIMETERS AND INCHES

FOR INFORMATION ONLY
NOT FOR MANUFACTURE

THORLABS INC. PO BOX 366
NEWTON NJ

TOLERANCES	NAME	DATE
UNLESS OTHERWISE SPECIFIED:	DRAWN AP	4/29/2006
DIMENSIONS ARE IN MILLIMETERS	ENG APPR. TO	4/29/2006
LINEAR TOLERANCES:	MFG APPR. TO	4/29/2006
ONE PLACE DECIMAL: \pm 0.2	PROPRIETARY AND CONFIDENTIAL	
TWO PLACE DECIMAL: \pm 0.04	THE INFORMATION CONTAINED IN THIS	
ANGULAR: \pm 30'	DRAWING IS THE SOLE PROPERTY OF	
	THORLABS, INC. ANY REPRODUCTION	
	IN PART OR AS A WHOLE WITHOUT	
	THE WRITTEN PERMISSION OF	
	THORLABS, INC. IS PROHIBITED.	

TITLE: Ø50.8mm UV FUSED SILICA BI CONVEX LENS		
MATERIAL: UV GRADE FUSED SILICA	SIZE A	REV. B
SCALE: 1:1	SHEET 1 OF 1	
DWG. NO. 3421-E01	PART NO. LB4865	