

NOTES:

1. SUBSTRATE: Silicon (Si)
2. SURFACE S2 TO BE PARALLEL TO SURFACE S1 TO WITHIN 3 ARCMIN
3. ENVIRONMENTAL REQUIREMENTS:

S1: DLC COATING

ADHESION: PER MIL-C-48497C
 ABRASION: SEVERE PER MIL-C-48497C
 HUMIDITY: 24 HOURS PER MIL-C-48497C
 SALT SOLUBILITY: ≥24 HOURS IMMERSION PER MIL-C-675C
 SALT SPRAY: ≥72 HOURS PER MIL-C-675
 SOLUBILITY AND CLEANING: PER MIL-C-48497
 TEMPERATURE (°F): -80 to +160 PER MIL-C-48497C
 WIPER: ≥1,000 WIPES OF SAND/SLURRY PER TS-1888

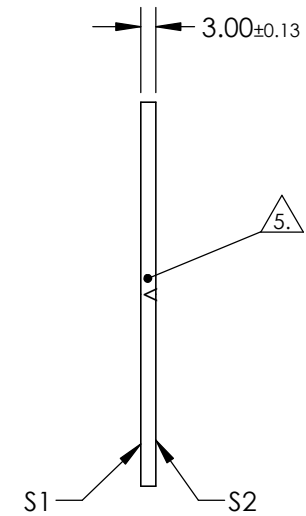
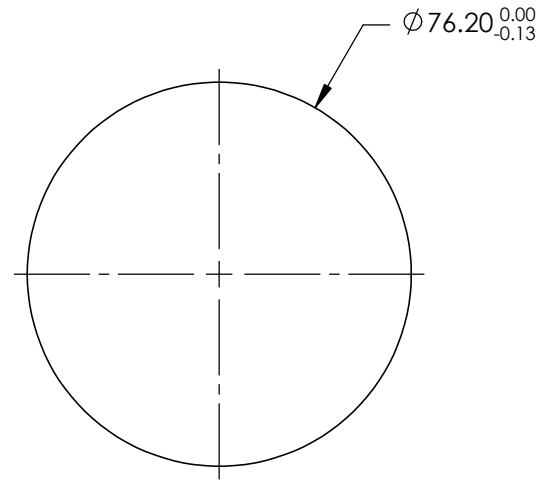
SURFACE S2: BBAR COATING

ADHESION: PER MIL-C-48497C
 ABRASION: MODERATE PER MIL-C-48497C
 HUMIDITY: 24 HOURS PER MIL-C-48497C
 SOLUBILITY AND CLEANING: PER MIL-C-48497
 TEMPERATURE (°F): -80 to +160 PER MIL-C-48497C

4. REFLECTION PERFORMANCE ACROSS CLEAR APERTURE
 S2: R(AVG) ≤0.5% FROM 3.0 - 5.0µm



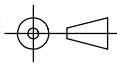
ARROW POINTS TOWARDS S1 WITH DLC COATING



**FOR INFORMATION ONLY:
 DO NOT MANUFACTURE
 PARTS TO THIS DRAWING**

SPECIFICATIONS SUBJECT TO CHANGE WITHOUT NOTICE
 DIMENSIONS ARE FOR REFERENCE ONLY

	S1	S2
SHAPE	PLANO	PLANO
SURFACE FLATNESS	λ/10 @ 10.6µm	λ/10 @ 10.6µm
SURFACE QUALITY	40-20	40-20
CLEAR APERTURE	Ø64.77	Ø64.77
BEVEL	PROTECTED AS NEEDED	PROTECTED AS NEEDED

THIRD ANGLE PROJECTION 

ALL DIMS IN mm

EO® Edmund Optics®

TITLE: 76.2mm Dia. x 3mm Thick, 3-5µm AR Coated & DLC Coated, Si Window

DWG NO: 16818

SHEET 1 OF 1