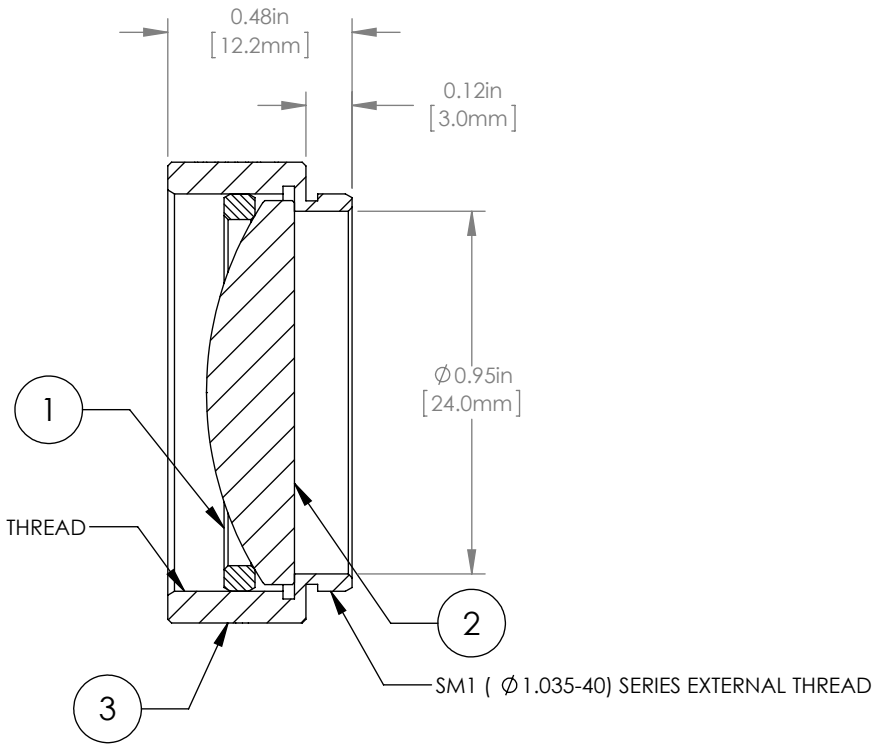
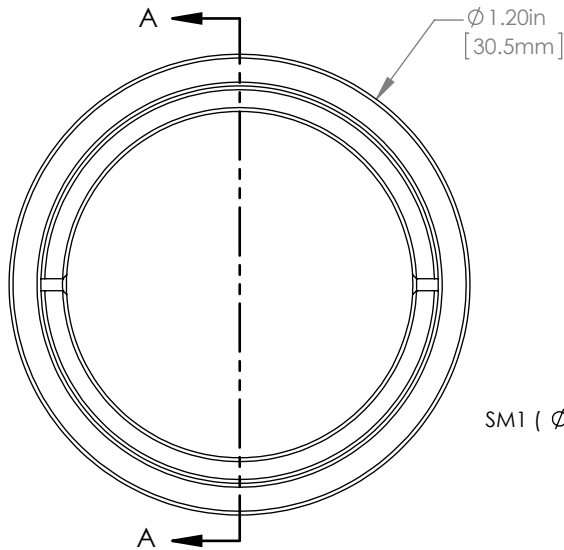


	PART DESCRIPTION	MATERIAL
①	SM1RR	ANODIZED ALUMINUM
②	LA4148-C	UV FUSED SILICA
③	ENGRAVED HOUSING	ANODIZED ALUMINUM



NOTES/SPECIFICATIONS:

1. DESIGN WAVELENGTH: 546nm
2. FOCAL LENGTH: $f=50.0\text{mm} \pm 1\%$
3. WORKING DISTANCE (REF): 42.2mm
4. CLEAR APERTURE: $> \varnothing 22.86\text{mm}$
5. SURFACE QUALITY: 40-20 SCRATCH-DIG
6. COATING: BBAR $R_{\text{avg}} < 0.5\%$ FROM 1050-1700nm, AOI: 0°, ON OUTER OPTICAL SURFACES

FOR INFORMATION ONLY
NOT FOR MANUFACTURING PURPOSES

DRAWING PROJECTION						THORLABS www.thorlabs.com	
NAME	DATE	$\varnothing 1"$ MOUNTED PLANO-CONVEX LENS, $f=50\text{mm}$, -C COAT				MATERIAL	REV
DRAWN	GG	13/OCT/15	SEE TABLE				A
APPROVAL	DD	13/OCT/15	ITEM #				APPROX WEIGHT
COPYRIGHT © 2015 BY THORLABS		LA4148-C-ML				10 g	
<small>VALUES IN PARENTHESIS ARE CALCULATED AND MAY CONTAIN ROUND OFF ERRORS</small>							