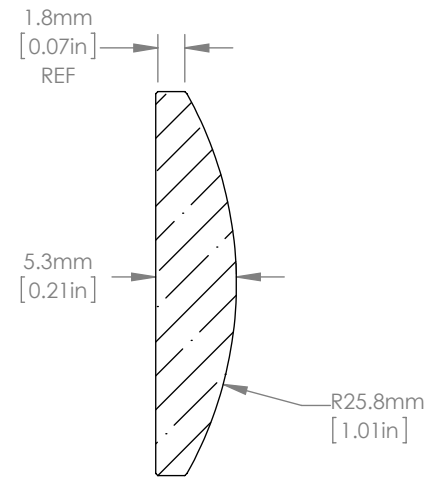
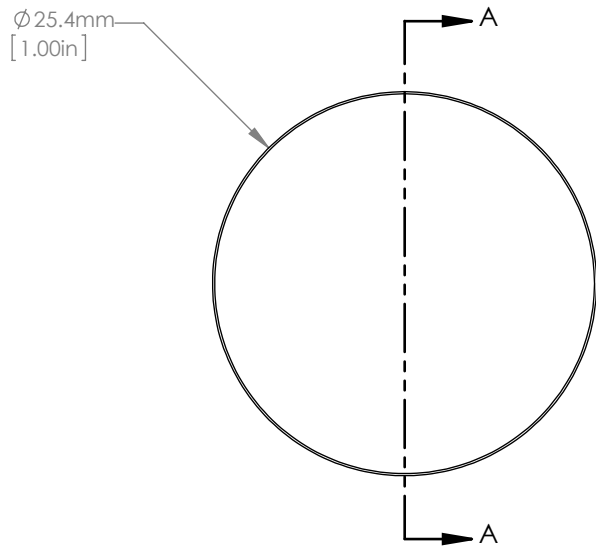




ISOMETRIC VIEW
SCALE: 1:1



SECTION A-A
SCALE 2 : 1

NOTES/SPECIFICATIONS:

1. DESIGN WAVELENGTH: 587.6nm
2. FOCAL LENGTH: $f= 49.83\text{mm} \pm 1\%$
3. BACK FOCAL LENGTH(REF): $bf= 46.31\text{mm}$
4. CLEAR APERTURE: >90%
5. SURFACE QUALITY: 20-10 SCRATCH-DIG
6. CENTRATION: <3arcmin
7. DIAMETER TOLERANCE: $\pm 0.0/-0.1\text{mm}$
8. THICKNESS TOLERANCE: $\pm 0.1\text{mm}$
9. COATING: VAR R<0.25% PER SURFACE FOR 633nm

FOR INFORMATION ONLY
NOT FOR MANUFACTURING PURPOSES

DRAWING PROJECTION			 www.thorlabs.com N-BK7 PLANO-CONVEX LENS D=25.4mm, f=50.0mm, ARC: 633nm	
NAME	DATE			
DRAWN	RJ	03/JAN/11	MATERIAL	
APPROVAL	DD	05/JAN/11	N-BK7	
COPYRIGHT © 2010 BY THORLABS			ITEM #	APPROX WEIGHT
VALUES IN PARENTHESIS ARE CALCULATED AND MAY CONTAIN ROUND OFF ERRORS			LA1131-633	0.03 kg
			REV	B