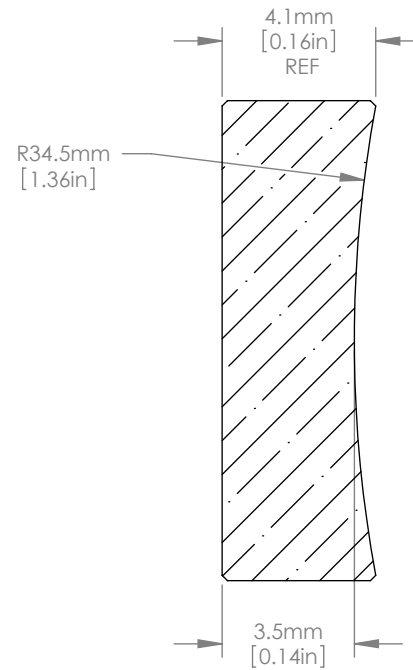
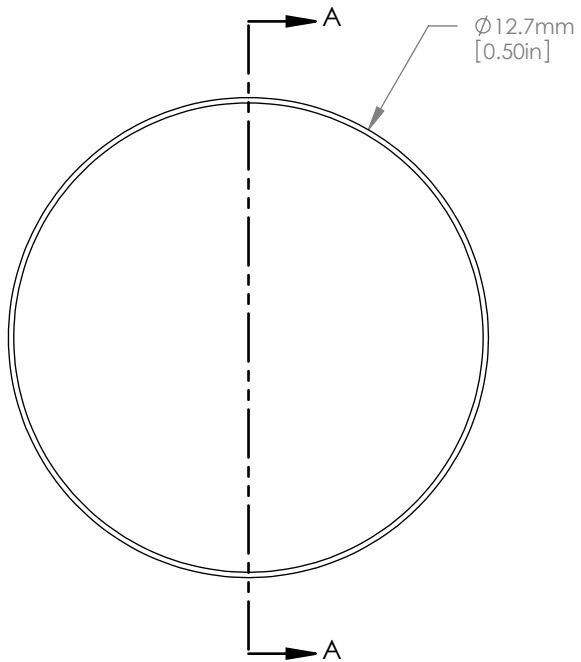




SCALE 1:1



NOTES/SPECIFICATIONS:

1. DESIGN WAVELENGTH: 588nm
2. FOCAL LENGTH: $f=-75.0\text{mm} \pm 1\%$
3. BACK FOCAL LENGTH(REF): $bf=-77.4\text{mm}$
4. CLEAR APERTURE: $>90\%$
5. SURFACE QUALITY: 40-20 SCRATCH-DIG
6. CENTRATION: $\leq 3\text{arcmin}$
7. DIAMETER TOLERANCE: $+0.0/-0.1\text{mm}$
8. THICKNESS TOLERANCE: $\pm 0.1\text{mm}$

FOR INFORMATION ONLY
NOT FOR MANUFACTURING PURPOSES

DRAWING PROJECTION

| | NAME | DATE |
|----------|------|-----------|
| DRAWN | GG | 15/NOV/10 |
| APPROVAL | JC | 13/DEC/10 |

COPYRIGHT © 2010 BY THORLABS

VALUES IN PARENTHESIS ARE CALCULATED AND MAY CONTAIN ROUND OFF ERRORS

THORLABS
www.thorlabs.com

D=12.7mm F=-75.0mm UVFS
PLANO CONCAVE LENS

| | |
|-----------------------|-----|
| MATERIAL | REV |
| UV GRADE FUSED SILICA | B |

| | |
|--------|---------------|
| ITEM # | APPROX WEIGHT |
| LC4413 | 0.02 kg |