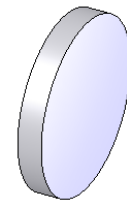
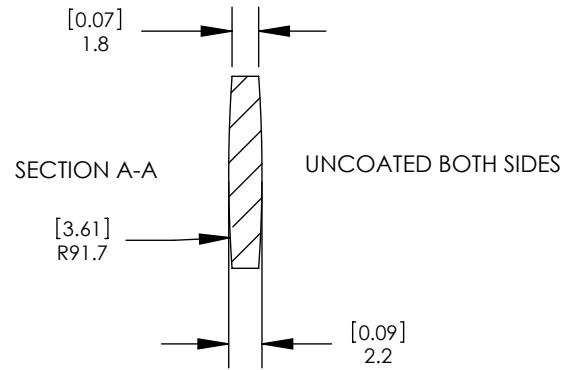
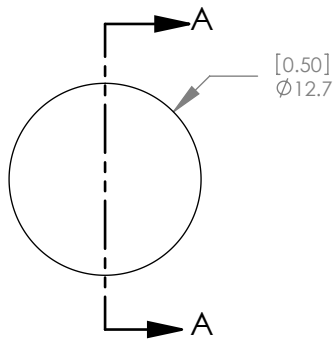


REV. #	DESCRIPTION:	NAME/DATE:



FOCAL LENGTH: 100.0mm ±1%
 BACK FOCAL LENGTH: 99.2mm
 INDEX: 1.460 @ 588nm
 DESIGN WAVELENGTH: 588nm
 SCRATCH/DIG: 40/20
 DIAMETER TOLERANCE: +0.00mm/-0.10mm
 CLEAR APERTURE: >90% OF DIAMETER
 CENTRATION: 3 arcmin

ALL DIMENSIONS IN
MILLIMETERS AND INCHES

FOR INFORMATION ONLY
NOT FOR MANUFACTURE

THORLABS INC. PO BOX 366
NEWTON NJ

TOLERANCES		NAME	DATE
UNLESS OTHERWISE SPECIFIED:		DRAWN	AP 4/29/2006
DIMENSIONS ARE IN MILLIMETERS		ENG APPR.	TO 4/29/2006
LINEAR TOLERANCES:		MFG APPR.	TO 4/29/2006
ONE PLACE DECIMAL: ±0.2		PROPRIETARY AND CONFIDENTIAL	
TWO PLACE DECIMAL: ±0.04		THE INFORMATION CONTAINED IN THIS	
ANGULAR: ±30'		DRAWING IS THE SOLE PROPERTY OF	
		THORLABS, INC. ANY REPRODUCTION	
		IN PART OR AS A WHOLE WITHOUT	
		THE WRITTEN PERMISSION OF	
		THORLABS, INC. IS PROHIBITED.	

TITLE: Ø12.7mm UV FUSED SILICA BI CONVEX LENS			
MATERIAL: UV GRADE FUSED SILICA		SIZE A	REV. B
SCALE: 2:1		SHEET 1 OF 1	
DWG. NO. 3398-E01	PART NO. LB4627		