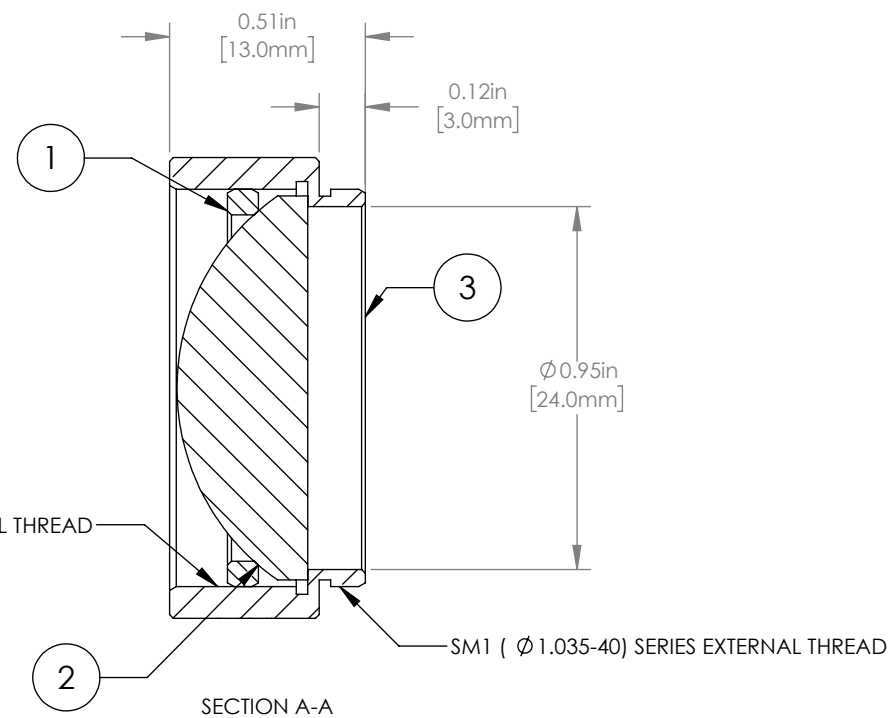
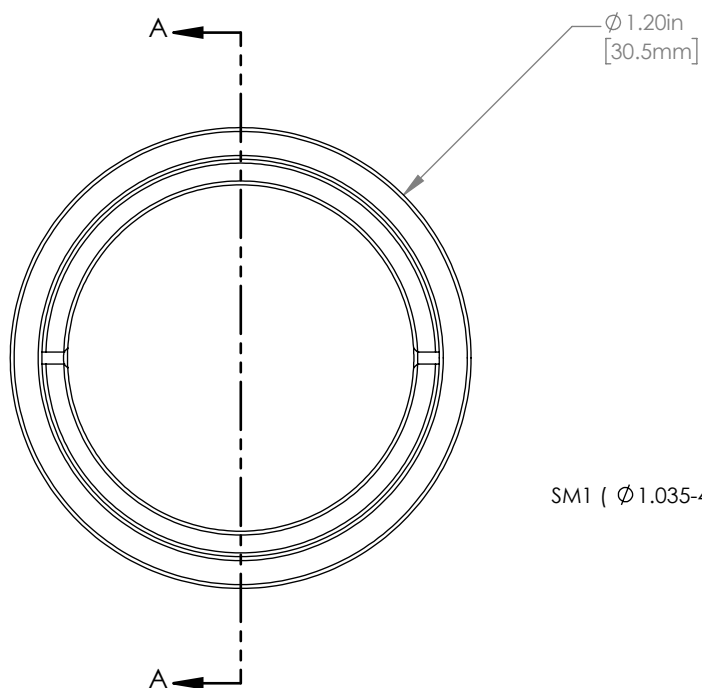


	PART DESCRIPTION	MATERIAL
①	SM1RR	ANODIZED ALUMINUM
②	LA1805	N-BK7
③	ENGRAVED HOUSING	ANODIZED ALUMINUM



NOTES/SPECIFICATIONS:

- DESIGN WAVELENGTH: 587.6 nm
- FOCAL LENGTH: $f=29.9\text{ mm} \pm 1\%$
- WORKING DISTANCE (REF): 20.4 mm
- CLEAR APERTURE: $\phi 22.9\text{ mm}$
- SURFACE QUALITY: 40-20 SCRATCH-DIG

FOR INFORMATION ONLY
NOT FOR MANUFACTURING PURPOSES

DRAWING PROJECTION					
	NAME		DATE	THORLABS www.thorlabs.com MOUNTED $\phi 1'' f=30\text{ mm}$ PLANO CONVEX LENS	
DRAWN	GG		20/JAN/20		
APPROVAL	DD		20/JAN/20		
COPYRIGHT © 2020 BY THORLABS				MATERIAL	REV
				SEE TABLE	A
VALUES IN PARENTHESIS ARE CALCULATED AND MAY CONTAIN ROUND OFF ERRORS				ITEM #	APPROX WEIGHT
				LA1805-ML	14 g