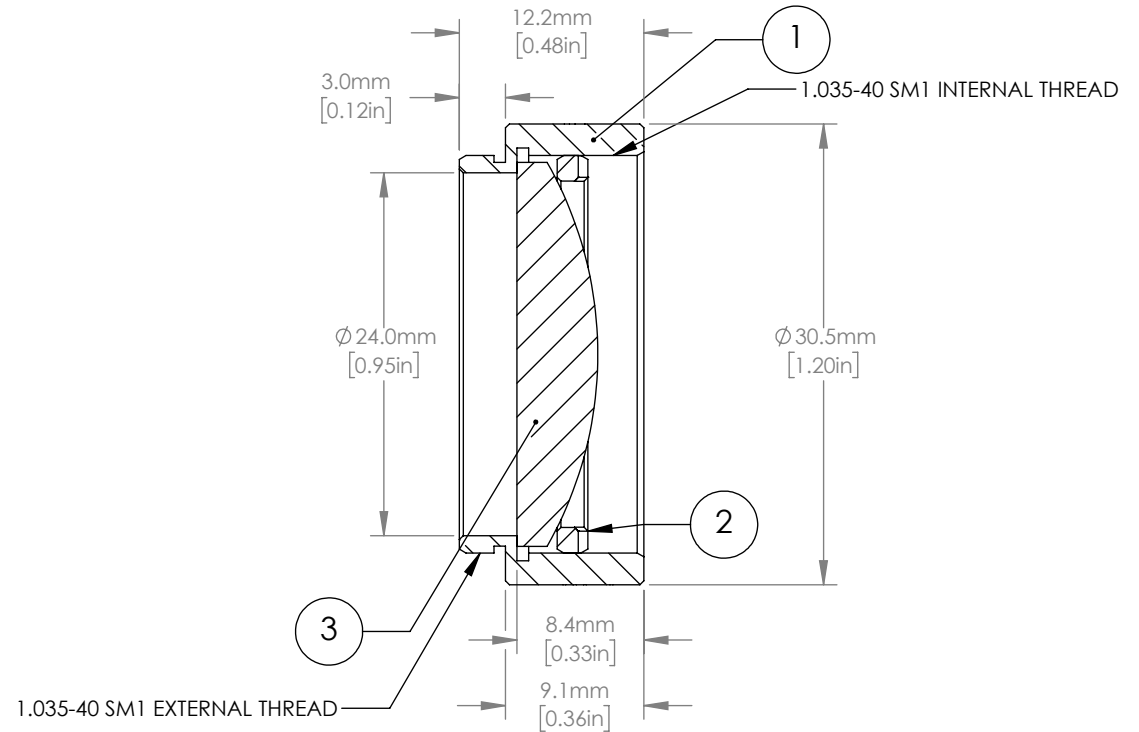
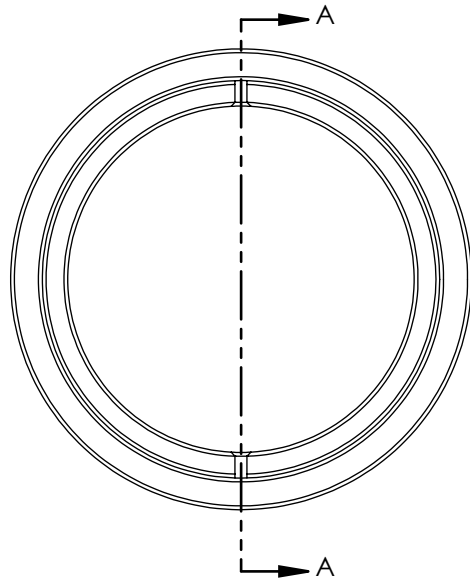


	PART DESCRIPTION	MATERIAL
①	ENGRAVED LENS TUBE	ANODIZED ALUMINUM
②	SM1RR	ANODIZED ALUMINUM
③	LA1131-B	N-BK7



SECTION A-A  
SCALE 2 : 1

NOTES/SPECIFICATIONS:

- DESIGN WAVELENGTH: 633 nm
- FOCAL LENGTH:  $f=50.0 \text{ mm} \pm 1\%$
- WORKING DISTANCE: 43.7 mm
- CLEAR APERTURE: >90% OF LENS DIAMETER
- SURFACE QUALITY: 40-20 SCRATCH-DIG
- COATING: BBAR  $R_{\text{avg}} < 0.5\%$  FROM 650 nm-1050 nm, 0 AOI, ON OUTER OPTICAL SURFACES

FOR INFORMATION ONLY  
NOT FOR MANUFACTURING PURPOSES

DRAWING PROJECTION			THORLABS www.thorlabs.com	
	NAME	DATE	PLANO-CONVEX LENS, Ø1", SM1-THREADED MOUNT, $f = 50.0 \text{ mm}$ , B-COAT	
DRAWN	DFS	06/NOV/20	MATERIAL	
APPROVAL	BW	12/NOV/20	SEE TABLE	REV B
COPYRIGHT © 2020 BY THORLABS			ITEM #	APPROX WEIGHT
VALUES IN PARENTHESIS ARE CALCULATED AND MAY CONTAIN ROUND-OFF ERRORS			LA1131-B-ML	0.030 kg