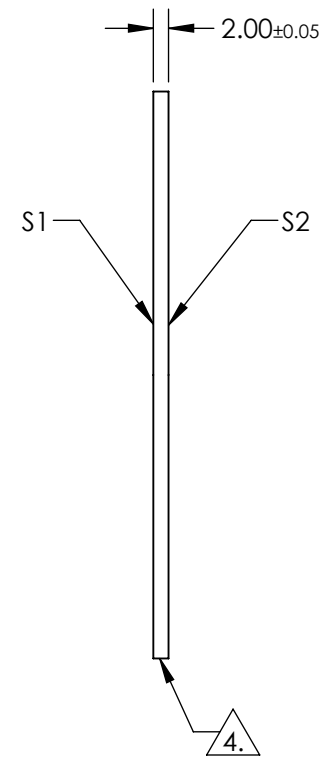
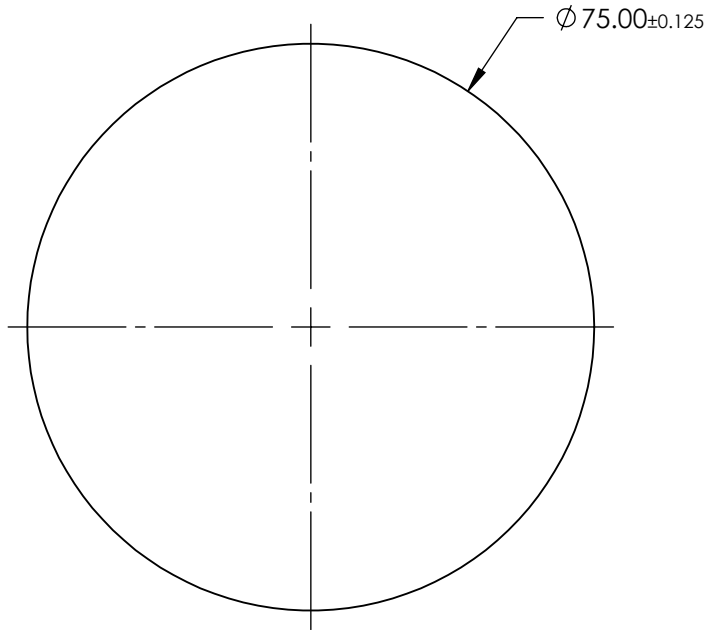
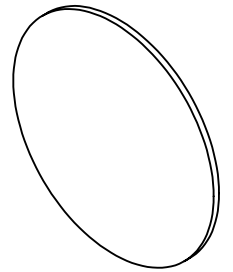


NOTES:

1. SUBSTRATE: Sapphire ( $Al_2O_3$ )
2. SURFACE S1 TO BE PARALLEL WITH SURFACE S2 TO WITHIN  $\leq 3.5$  ARCMIN
3. COATING (APPLY ACROSS CLEAR APERTURE)  
S1 & S2: R(AVG)  $\leq 1.75\%$  @ 400 - 700nm

4. FINE GRIND SURFACE

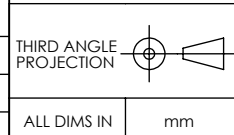
5. ROHS COMPLIANT



**FOR INFORMATION ONLY:  
DO NOT MANUFACTURE  
PARTS TO THIS DRAWING**

SPECIFICATIONS SUBJECT TO CHANGE WITHOUT NOTICE  
DIMENSIONS ARE FOR REFERENCE ONLY

	S1	S2
SHAPE	PLANO	PLANO
SURFACE QUALITY	80-50	80-50
CLEAR APERTURE	Ø 67.50	Ø 67.50
SURFACE FLATNESS	2λ (typical)	2λ (typical)
BEVEL	PROTECTED AS NEEDED	PROTECTED AS NEEDED



**EO**® Edmund Optics®

TITLE	75mm Diameter, MgF2 AR Coated Sapphire Window		
DWG NO	18947	SHEET	1 OF 1