

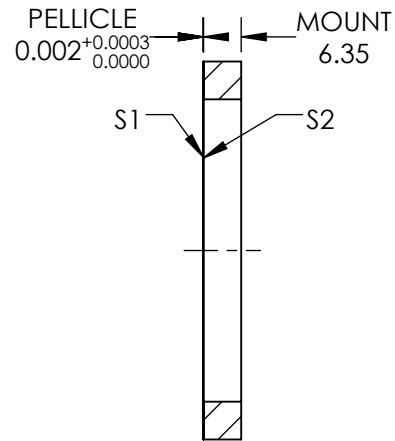
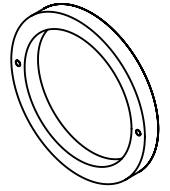
NOTES:

1. SUBSTRATE MATERIAL:  
NITROCELLULOSE
2. COATING (APPLY ACROSS COATING APERTURE)

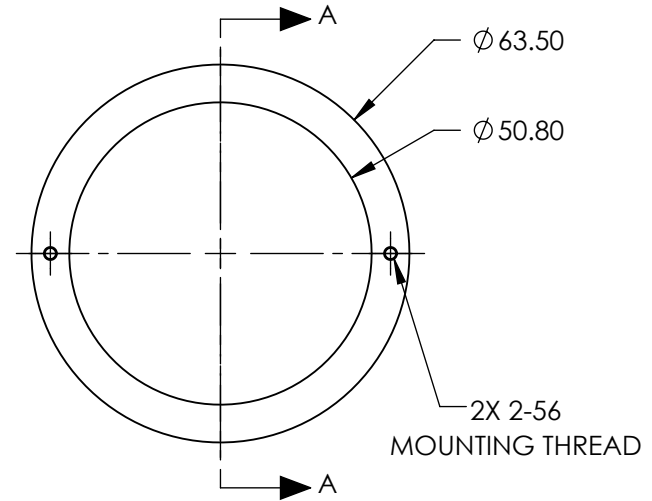
S1: METAL/DIELECTRIC  
40% R @ 400 - 700nm @ 45° AOI  
40% T @ 400 - 700nm @ 45° AOI  
R/T TOLERANCE: ±3%

S2: NONE

3. ROHS : EXEMPT



SECTION A-A



**FOR INFORMATION ONLY:  
DO NOT MANUFACTURE  
PARTS TO THIS DRAWING**

SPECIFICATIONS SUBJECT TO CHANGE WITHOUT NOTICE  
DIMENSIONS ARE FOR REFERENCE ONLY

| REV.A.          | S1                   | S2                   |
|-----------------|----------------------|----------------------|
| SHAPE           | PLANO                | PLANO                |
| SURFACE QUALITY | 40-20                | 40-20                |
| CLEAR APERTURE  | Ø50.80               | Ø50.80               |
| BEVEL           | PROTECTIVE AS NEEDED | PROTECTIVE AS NEEDED |



ALL DIMS IN

mm

**EO**® Edmund Optics®

TITLE

BS PELLICLE 2in DIA 40R/40T

DWG NO

39483

SHEET  
1 OF 1