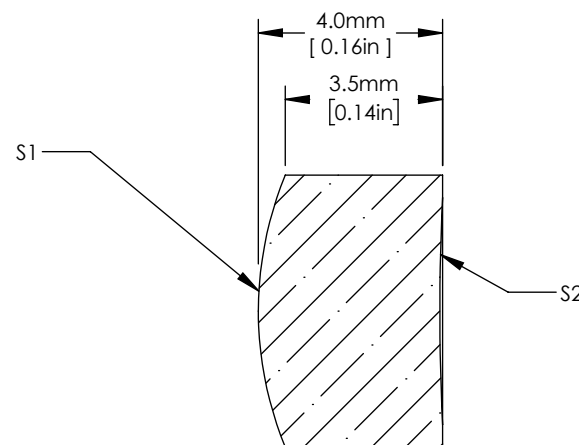
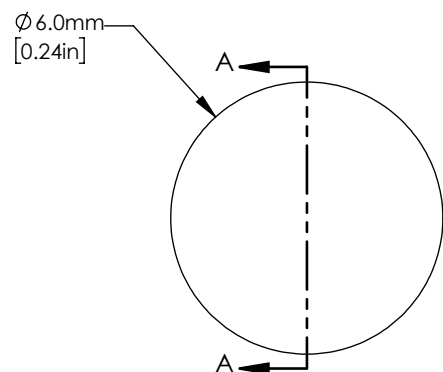




1:1 ISOMETRIC VIEW
FOR REFERENCE ONLY



SECTION A-A

NOTES/SPECIFICATIONS:

1. NUMERICAL APERTURE: 0.14
2. CLEAR APERTURE: 5.0 mm
3. SURFACE QUALITY: 60-40 SCRATCH-DIG
4. DESIGN WAVELENGTH: 633 nm
5. WORKING DISTANCE: 15.069 mm
6. RMS WAVEFRONT ERROR: <DIFFRACTION LIMITED AT DESIGN WAVELENGTH
7. OPERATING TEMPERATURE: 10-85 °C

FOR INFORMATION ONLY
NOT FOR MANUFACTURING PURPOSES

DRAWING PROJECTION			THORLABS www.thorlabs.com ASPHERIC LENS, f=18.00 mm, $\varnothing=6.00$ mm	
	NAME	DATE		
DRAWN	MG	06/FEB/12	MATERIAL ACRYLIC	
APPROVAL	BAG	26/AUG/21		
COPYRIGHT © 2021 BY THORLABS VALUES IN PARENTHESIS ARE CALCULATED AND MAY CONTAIN ROUND OFF ERRORS			ITEM # APL0618	APPROX WEIGHT 0.1 g
			REV	B