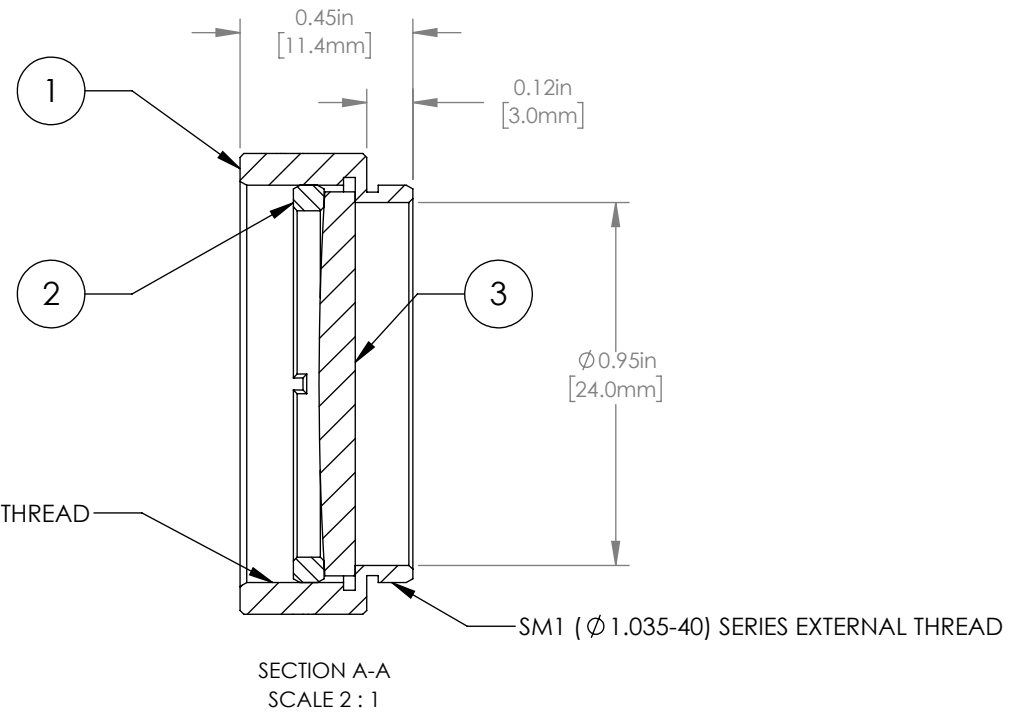
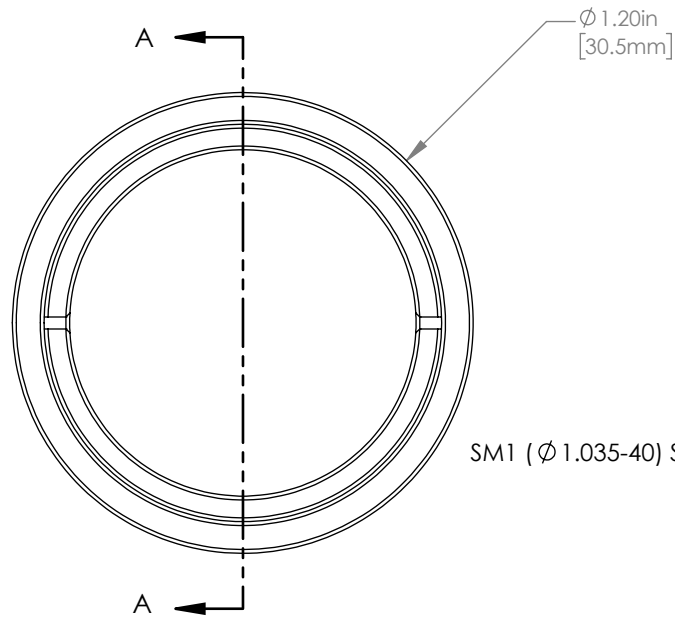


	PART DESCRIPTION	MATERIAL
①	ENGRAVED HOUSING	ANODIZED ALUMINUM
②	SM1RR	ANODIZED ALUMINUM
③	LA1172-B	N-BK7



NOTES/SPECIFICATIONS:

- DESIGN WAVELENGTH: 587.6 nm
- FOCAL LENGTH:  $f=398.7\text{ mm} \pm 1\%$
- WORKING DISTANCE: 393.3 mm
- CLEAR APERTURE:  $\phi 22.9\text{ mm}$
- SURFACE QUALITY: 40-20 SCRATCH-DIG
- COATING: BBAR 650-1050 nm,  $R_{\text{avg}} < 0.5\%$ ,  $0^\circ$  AOI

FOR INFORMATION ONLY  
NOT FOR MANUFACTURING PURPOSES

DRAWING PROJECTION		THORLABS www.thorlabs.com	
NAME	DATE	MOUNTED $\phi 25.4\text{ mm}$ , $f = 400.0\text{ mm}$ PLANO CONVEX LENS, B COATED	
DRAWN GG	22/AUG/19	MATERIAL	SEE TABLE
APPROVAL DD	22/AUG/19	ITEM #	LA1172-B-ML
COPYRIGHT © 2019 BY THORLABS		APPROX WEIGHT	8 g
VALUES IN PARENTHESIS ARE CALCULATED AND MAY CONTAIN ROUND OFF ERRORS		REV	B