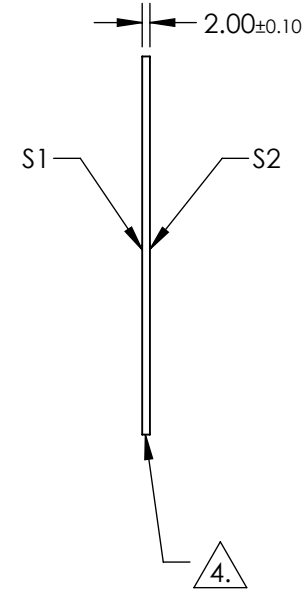
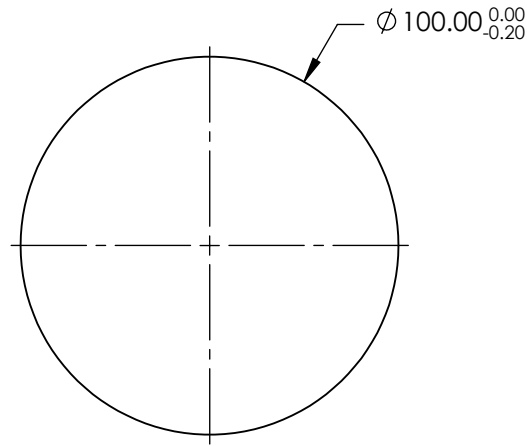
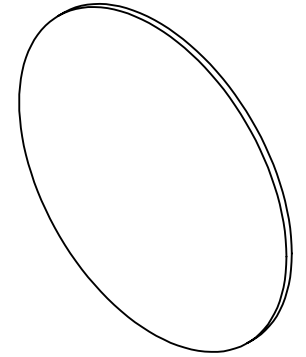


NOTES:

1. SUBSTRATE:  
Fused Silica (Corning 7980)
2. S2 TO BE PARALLEL WITH S1 TO WITHIN <1 ARCMIN
3. COATING (APPLY ACROSS CLEAR APERTURE)  
S1 & S2: R(ABS) ≤1.0% FROM 350 - 450nm  
R(AVG) ≤1.5% FROM 250 - 700nm
4. FINE GRIND SURFACE
5. RoHS COMPLIANT



**FOR INFORMATION ONLY:  
DO NOT MANUFACTURE  
PARTS TO THIS DRAWING**

SPECIFICATIONS SUBJECT TO CHANGE WITHOUT NOTICE  
DIMENSIONS ARE FOR REFERENCE ONLY

	S1	S2
SHAPE	PLANO	PLANO
SURFACE QUALITY	40-20	40-20
CLEAR APERTURE (mm)	Ø90.00	Ø90.00
BEVEL	PROTECTIVE AS NEEDED	PROTECTIVE AS NEEDED



ALL DIMS IN mm

**EO**® Edmund Optics®

TITLE

100mm Dia., 2mm Thick, UV-VIS Coated, λ/4  
Fused Silica Window

DWG NO

22055

SHEET  
1 OF 1