

NOTES:

1. SUBSTRATE: FUSED SILICA
2. SURFACE S2 TO BE PARALLEL TO SURFACE S1 TO WITHIN <3 ARCMIN

3. COATING (APPLY ACROSS COATING APERTURE)

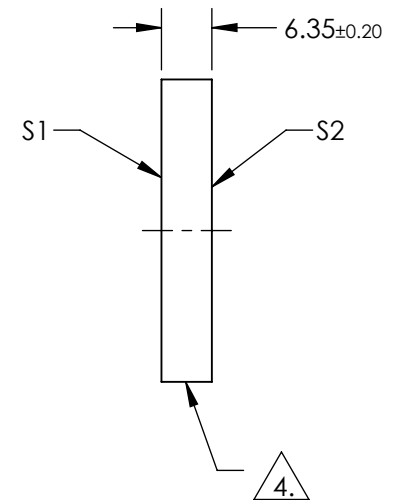
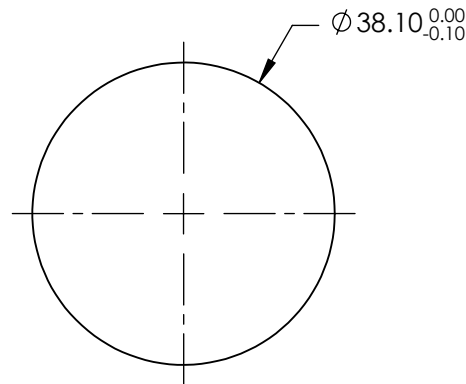
S1: Laser V-Coat (355nm)
R(ABS) <0.25% @ 355nm @ 0 ±5° AOI

DAMAGE THRESHOLD,
PULSED: 7.5 J/cm² @ 355nm, 20ns, 20Hz

S2: NONE

4. FINE GRIND SURFACE

5. ROHS: COMPLIANT



**FOR INFORMATION ONLY:
DO NOT MANUFACTURE
PARTS TO THIS DRAWING**

SPECIFICATIONS SUBJECT TO CHANGE WITHOUT NOTICE
DIMENSIONS ARE FOR REFERENCE ONLY

	S1	S2
SHAPE	PLANO	PLANO
SURFACE QUALITY	10-5	10-5
CLEAR APERTURE	90 %	90 %
BEVEL	PROTECTIVE AS NEEDED	PROTECTIVE AS NEEDED

THIRD ANGLE PROJECTION

ALL DIMS IN mm

Edmund Optics®

TITLE 38.1mm Dia. 355nm, Nd:YAG Laser Line Beam Sampler

DWG NO 39006

SHEET 1 OF 1